

S8200 SERIES SWITCHES

DATASHEET

High Performance Data Center Switch

Version:V1.4

Release Date:2026/5/29

Product Overview

The S8200 Series switches designed on a domestic new generation switch Chip, which called [PowerLink Series Chip platform](#). With 32*200G QSFP56 high speed ports and rich features, these switches will perfectly meets the requirements of Metro, Enterprise, Data Center, and Hyper converged infrastructure (HCI) networks.



Key features of the S8200 Switch

- MPLS technology, with label switching as its core, combines the flexibility of IP networks and the reliability of connection-oriented networks, enabling isolated bearing of multiple services, precise traffic scheduling, and fast fault self-healing while reducing the deployment and operation costs of complex networking, thus adapting to the efficient networking needs of governments, enterprises, operators and other multi-scenarios.
- MLAG which can build an Active-Active system to improve the reliability of the network links from single board grade to device grade.
- Implementing Vxlan and BGP protocols to build EVPN applications for data centers scenario.
- Switch-to-switch encryption using MACsec (Media Access Control Security) AES-CMAC.
- Precision Timing Protocol.
- Rich L2/L3 features like IPv6, OSPF, BGP, PIM, etc.

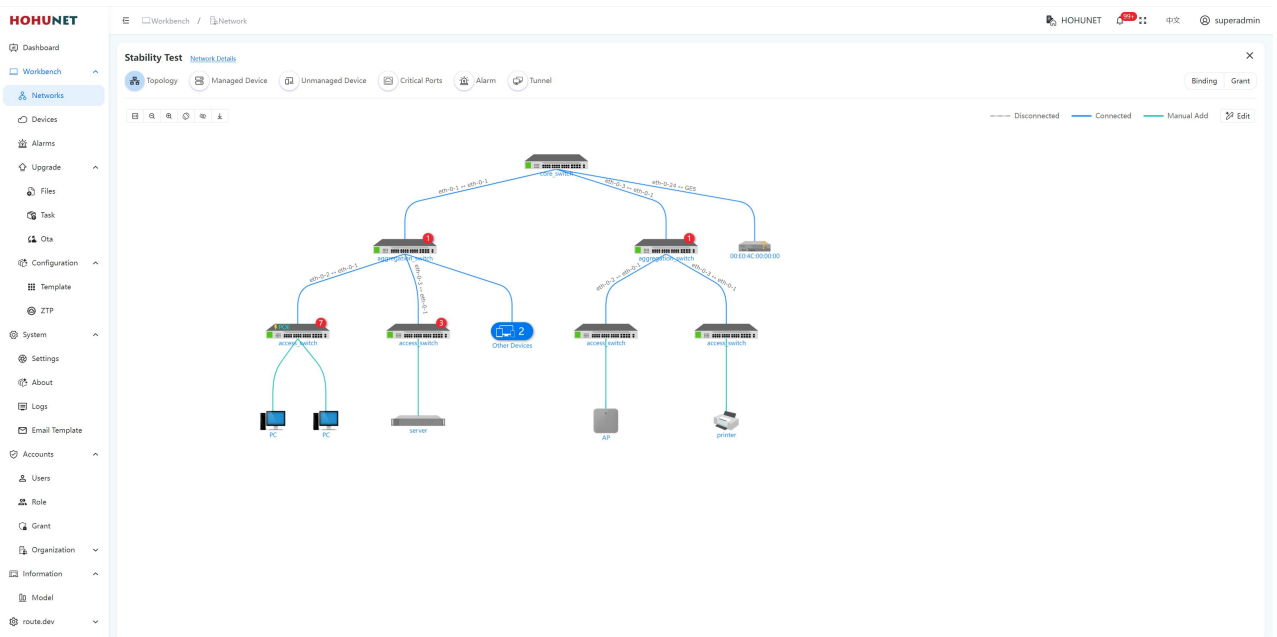
The S8200 Series switches provide redundant hot-swappable power supplies (AC and DC are both available) and 6 bays with Field replaceable fan modules. Generally, airflow of S8200 Series is front to rear (AFO), but a customization of rear to front (AFI) airflow is also acceptable.

Table 1: Feasible PSU and airflow of S8232

Items	AC	DC	AFO	AFI	Power Input	FAN
S8232-2X-EI	○	○	○	○	2	5

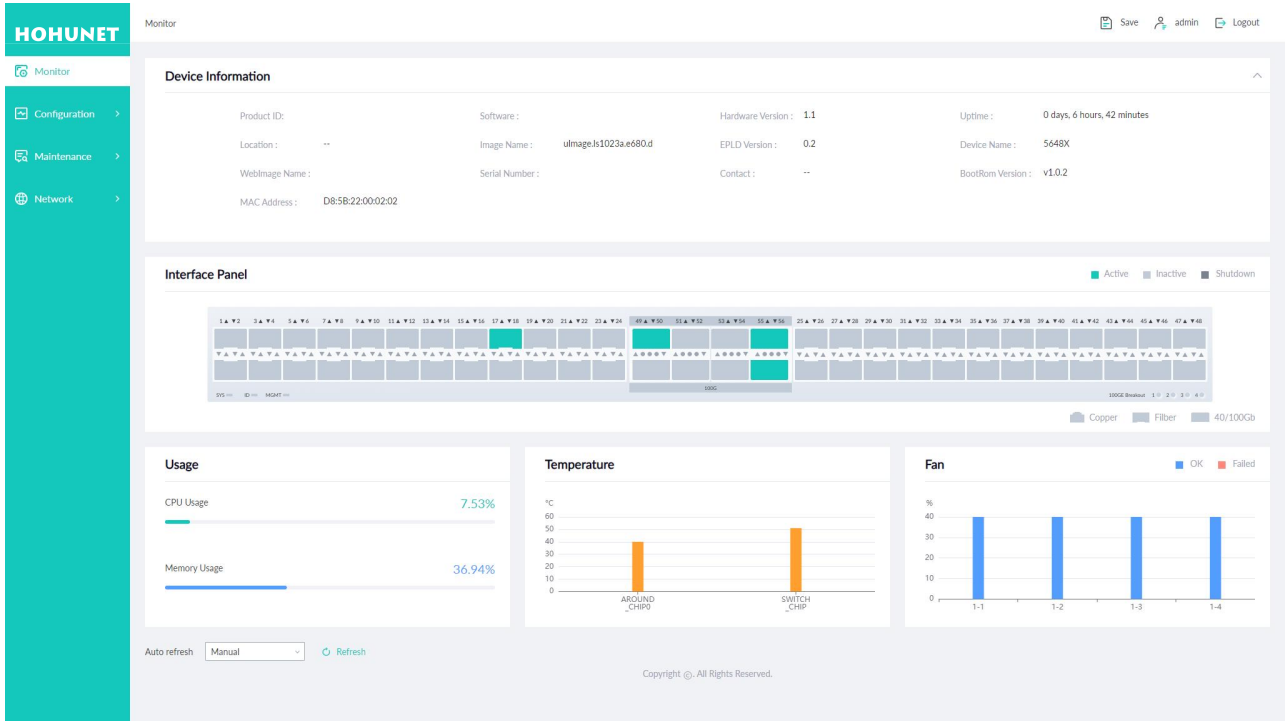
The S8200 Series switches support varied management ways, include console port / in-band network ports / out-of-band network port. Support SNMP v1/v2/v3, Support CLI (Command Line Interface), web management, Telnet and FTP connection. Support OAM to make management more convenient, and support SSH2.0, SSL, etc. to ensure security of management.

Moreover, leveraging its profound technical expertise and in-depth understanding of campus and enterprise networking needs, Hohunet has launched the Da Hu Cloud Management System (DHCS). It enhances network management and maintenance efficiency, reduces costs, elevates management intelligence, and delivers a faster, smarter, more secure and reliable network to better meet user requirements.



Visual WEB GUI

HOS allows you to quickly configure common configuration items using a visual WEB GUI, which lowers the application threshold for users.



The S8200 family of Ethernet switches consists of the following models

Table 2: Family of the S8200 Series switches

Models	Ethernet Ports	Management	PSU 1/PSU 2	Cooling
S8232-2X-EI	32 x 200G QSFP56, 2 x 10G SFP+	Console: RJ45 to RS232 Ethernet: 1G Port Storage: USB	800W /800W CRPS	5 x Fan Modules (front-to-back airflow)

S8232 Physical Specifications

Packet Switch capacity (Tbps)

- S8232-2X-EI: 12.8 Tbps (bidirectional)

Layer 2/Layer 3 Throughput (BPPS)

- S8232-2X-EI: 1.82 BPPS

CPU

- 4-core processor, ARM A53(1GHz)

Memory

- eMMC: 8GB on all models
- DRAM: 4GB on all models

Dimensions (W x H x D) with package

- S8232-2X-EI: 66.5 x 15 x 61cm

Dimensions (W x H x D) without package

- S8232-2X-EI: 44.2 x 4.4 x 47cm

Temperature alarm

- Alarm threshold: 50°C

Cooling [CFM] - Total maximum airflow

- S8232-2X-EI: 264.16

Weight (Net weight/Gross weight)

- S8232-2X-EI: 9.2kg/11kg

Power consumption

Worst case, all ports used, line-rate traffic

- S8232-2X-EI: TBD

No-load power consumption

- S8232-2X-EI: TBD

Environmental ranges

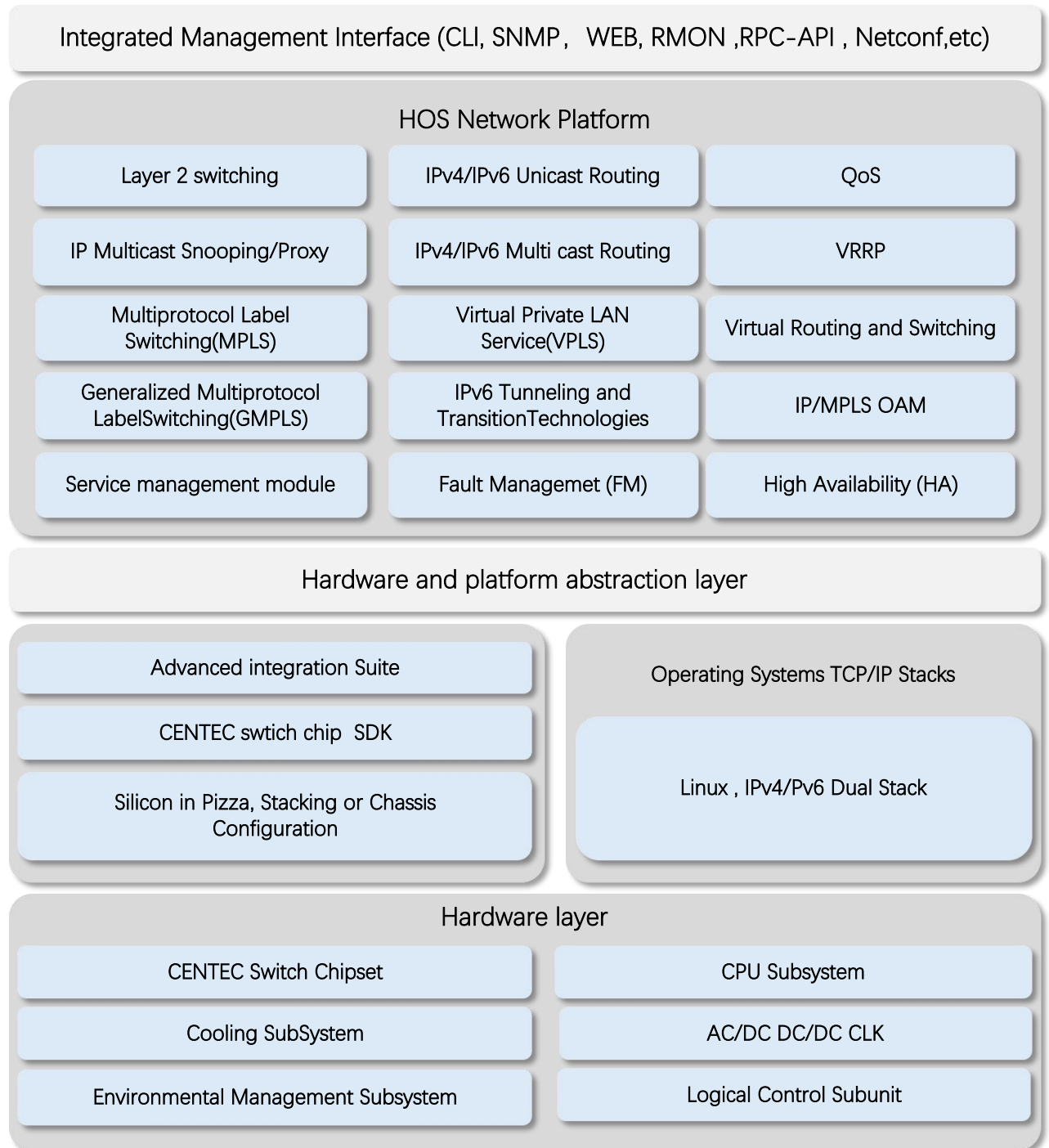
- Operating temperature: 0°C to 45°C
- Storage temperature: -40°C to 70°C
- Running Humidity: 10% to 90% (No condensation)
- Store Humidity: 5 to 95% (No condensation)
- Operating altitude:
S8232: 0~5km

MTBF

- S8232-2X-EI: $\geq 90000h$ (~10.3 Years)

S8232 Software Specifications

HOHUNET implements a unified software platform, and the software capabilities supported by the devices are listed in the document [‘HOS Software features’](#) .



- * All HOHUNET switches use a normalized software platform and image package file
- * Unified software version iteration plan
- * Unified user experience

Ordering Information

S8232 Switch

Items	Description
S8232-2X-EI	200G Data Center Switch, with 32*200G QSFP56, 2*10G SFP+, Dual power supply modules(C13), 5 hot-swappable fan modules.

AC Power Supplies use for all models

Items	Description
PSU-800-AC-AFO	S8232 800 W AC power supply (front-to-back airflow) Input: 100–240V AC; Output: 12V DC 106.6A Max

Software Licenses

Items	Description
Software License	MS, L3 enhance features software license key, Preinstalled
Software License	MA, MPLS features software license key
Software License	ST, Stacking feature software license key

Accessory of S8232

Items	Front Mounting	Rear Mounting	Screw	Power Cord	Console (RS232 to RJ45)
S8232-2X-EI:	2	2	14	2	1

About HOHUNET:

HOHUNET was established in 2015 as a technology-oriented company specializing in the independent development of switch products based on domestic chips. With the continuous evolution of chip technology, HOHUNET has launched a range of differentiated products based on this chip platform. Currently, the company's product line covers a range from 1G to 800G and can be used in scenarios such as enterprise networks, carrier networks, data centers, and AI computing power. Currently, the main cooperation model for the company is OEM/ODM, dedicated to providing customers with flexible and end-to-end customized products and technical consulting services. Becoming the most trusted business partner for customers has always been the company's mission and principle.

Contact us:

Headquarter Address:

Lining Center Building, Nanshan Hi-Tech Park, Nanshan, Shenzhen, Guangdong, China

Corporate and Sales Email: business@hohUNET.com

Telephone: 0086-755-26418565

Website: www.hohUNET.com

