

# S5700 SERIES SWITCHES

## DATASHEET

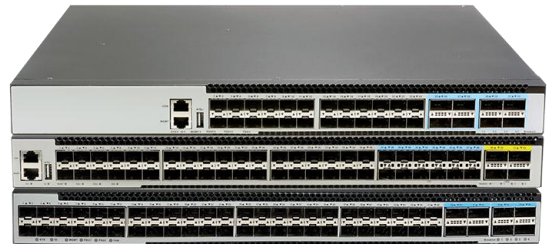
**10G Enterprise Switch**

**Version: V1.5**

**Release Date: 2025/12/12**

### Product Overview

The S5700 Series switches are designed based on new generations of domestic Switch Chips platform — [BigFlow Series Chip platform](#) with outstanding performance and cost efficiency, The S5700 Series switches have various port options and offer rich L2/L3 features, making them the perfect choice as aggregation or access switches for enterprise, government, specific industry networks.



### Key features of the S5700 Series Switches

- Support MPLS features (L2/L3 VPN) to build a unified and converged network platform.
- MLAG which can build an Active-Active system to improve the reliability of the network links from single board grade to device grade.
- Implementing Vxlan and BGP protocols to build EVPN applications for data centers scenario.
- Switch-to-switch encryption using MACsec (Media Access Control Security) AES-CMAC.
- Precision Timing Protocol.
- Rich L2/L3 features like IPv6, OSPF, BGP, PIM, etc.

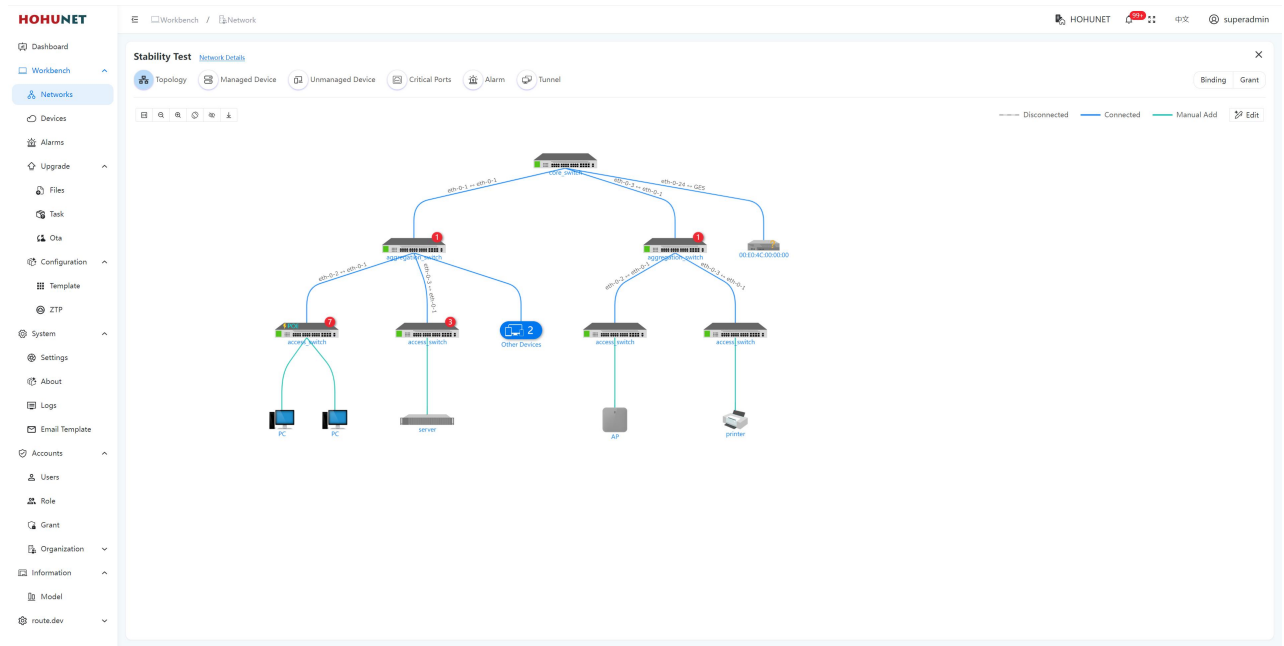
The S5700 Series switches provide various power supply solutions for customers choosing, fixed single power supply, fixed redundant power supplies, and redundant hot-swappable power supplies (AC and DC are both available). The Fan solutions also have multiple bays with Field replaceable fan modules and build in fans. Generally, air flow of S5700 Series is front to rear (AFO), and some of models can do customization of rear to front (AFI) airflow.

Table 1: Feasible PSU and airflow of S5700 Series Switches

Items	AC	DC	AFO	AFI	Power Input	FAN
S5748X-8Z-EI	○	○	○	○	2	4
S5748X-8Z-SI	○	X	○	X	1	4
S5732-16N4Z-EI	○	○	○	○	2	4
S5732-16N4Z-SI	○	X	○	X	1	4
S5724X-8Z-EI	○	○	○	○	2	4
S5724X-8Z-SI	○	X	○	X	1	4

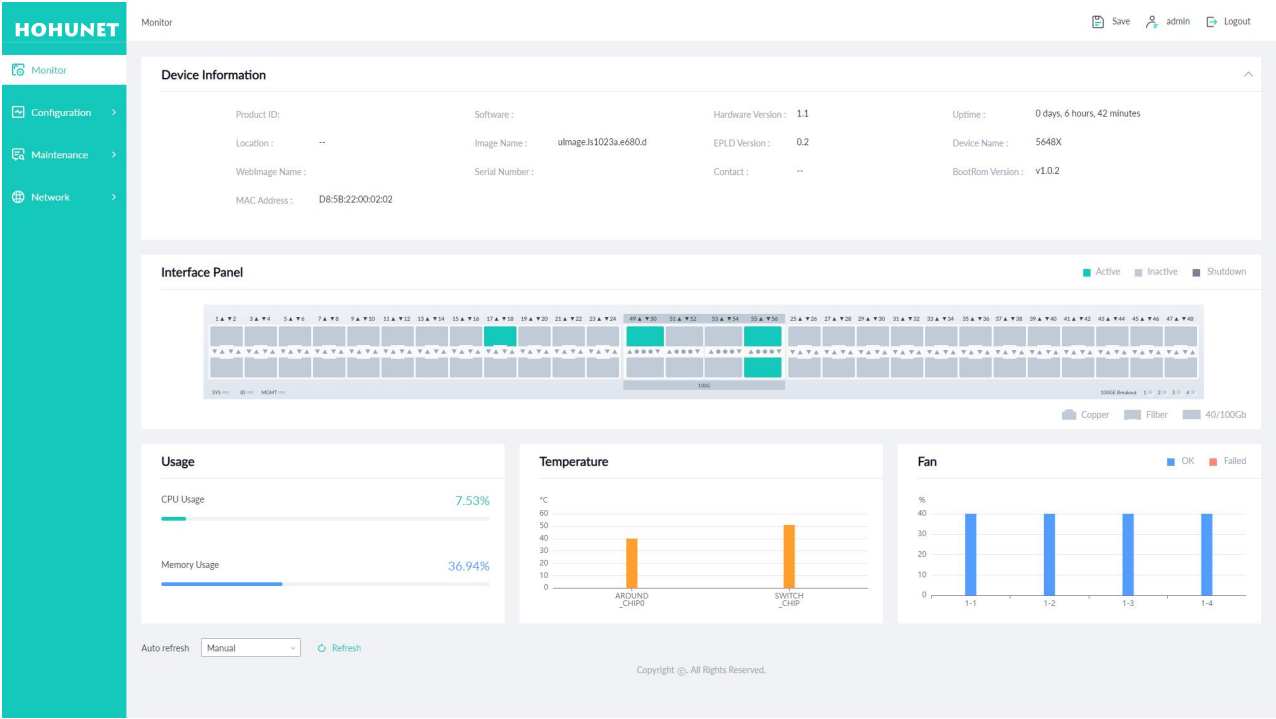
The S5700 Series switches support varied management ways, include console port / in-band network ports / out-of-band network port. Support SNMP v1/v2/v3, Support CLI (Command Line Interface), web management, Telnet and FTP connection. Support OAM to make management more convenient, and support SSH2.0, SSL, etc. to ensure security of management.

Moreover, leveraging its profound technical expertise and in-depth understanding of campus and enterprise networking needs, Hohunet has launched the Da Hu Cloud Management System (DHCS). It enhances network management and maintenance efficiency, reduces costs, elevates management intelligence, and delivers a faster, smarter, more secure and reliable network to better meet user requirements.



# Visual WEB GUI

HOS allows you to quickly configure common configuration items using a visual WEB GUI, which lowers the application threshold for users.



The S5700 family of Ethernet switches consists of the following models

Table 2: Family of the S5700 Series switches

Models	Ethernet Ports	Management	PSU 1/PSU 2	Cooling
S5748X-8Z-EI	48 x 10G SFP+ + 8 x 100G QSFP 28	Console: RJ45 to RS232 Ethernet: 1G Port Storage: USB	550W / 550W CRPS	4 x Fan Modules (front-to-back airflow)
S5748X-8Z-SI	48 x 10G SFP+ + 8 x 100G QSFP 28	Console: RJ45 to RS232 Ethernet: 1G Port Storage: USB	Fixed single power supply	4 x fixed fans (front-to-back airflow)
S5732-16N4Z-EI	32 x 10G SFP+ +16x 10G/25G SFP28, 4 x 100G QSFP28	Console: RJ45 to RS232 Ethernet: 1G Port Storage: USB	550W / 550W CRPS	4 x Fan Modules (front-to-back airflow)
S5732-16N4Z-SI	32*10G SFP+ +16*10G/25G SFP28, 4*100G QSFP28	Console: RJ45 to RS232 Ethernet: 1G Port Storage: USB	Fixed single power supply	4 x fixed fans (front-to-back airflow)
S5724X-8Z-EI	24 x 10G SFP+ + 8 x 100G QSFP 28	Console: RJ45 to RS232 Ethernet: 1G Port Storage: USB	350W / 350W CRPS	2 x Fan Modules (front-to-back airflow)
S5724X-8Z-SI	24 x 10G SFP+ + 8 x 100G QSFP 28	Console: RJ45 to RS232 Ethernet: 1G Port Storage: USB	Fixed single power supply	4 x fixed fans (front-to-back airflow)

S5700 Physical Specifications

Packet Switch capacity (Gbps)

- S5748X-8Z-EI: 2560 Gbps (bidirectional)
- S5748X-8Z-SI: 2560 Gbps (bidirectional)
- S5732-16N4Z-EI: 2.24Tbps (bidirectional)
- S5732-16N4Z-SI: 2.24Tbps (bidirectional)
- S5724X-8Z-EI: 2080 Gbps (bidirectional)
- S5724X-8Z-SI: 2080 Gbps (bidirectional)

Layer 2/Layer 3 Throughput (Mpps)

- S5748X-8Z-EI: 3809.28Mpps (bidirectional)
- S5748X-8Z-SI: 3809.28Mpps (bidirectional)
- S5732-16N4Z-EI: 3.333Gpps (bidirectional)
- S5732-16N4Z-SI: 3.333Gpps (bidirectional)
- S5724X-8Z-EI: 3095.04Mpps (bidirectional)
- S5724X-8Z-SI: 3095.04Mpps (bidirectional)

Dimensions (W x H x D) with package

- S5748X-8Z-EI: 66.5×15×56.5 cm
- S5748X-8Z-SI: 55.7×15×49.5 cm
- S5732-16N4Z-EI: 66.5×15×56.5 cm
- S5732-16N4Z-SI: 55.7×15×49.5 cm
- S5724X-8Z-EI: 55.7×15×49.5 cm
- S5724X-8Z-SI: 55.7×15×49.5 cm

CPU

- Dual-core processor, ARM A53(1.2GHz)  
on following models  
S5748X-8Z-EI  
S5748X-8Z-SI  
S5732-16N4Z-EI  
S5732-16N4Z-SI  
S5724X-8Z-EI  
S5724X-8Z-SI

Weight (Net weight/Gross weight)

- S5748X-8Z-EI: 7.9kg/10.1kg
- S5748X-8Z-SI: 5.9kg/8.1kg
- S5732-16N4Z-EI: 7.5kg/9.7kg
- S5732-16N4Z-SI: 5kg/7.2kg
- S5724X-8Z-EI: 6.6kg/8.8kg
- S5724X-8Z-SI: 4.1kg/6.3kg

Dimensions (W x H x D) without package

- S5748X-8Z-EI: 44.2×4.4×42 cm
- S5748X-8Z-SI: 44.2×4.4×35.5 cm
- S5732-16N4Z-EI: 44.2×4.4×42 cm
- S5732-16N4Z-SI: 44.2×4.4×35.6 cm
- S5724X-8Z-EI: 44.2×4.4×41 cm
- S5724X-8Z-SI: 44.2×4.4×35.7 cm

Temperature alarm

- Alarm threshold: 50°C

Memory

- eMMc: 8GB on all models
- DRAM: 2GB on all models

MTBF

- EI (Swapable PSU and FAN): ≥ 90000h  
(~10.3 Years)
- SI (Fixed PSU and FAN): ≥ 70000h  
(~8.0 Years)

Environmental ranges

- Operating temperature: 0°C to 45°C
- Storage temperature: -40°C to 70°C
- Running Humidity: 10% to 90% (No condensation)
- Store Humidity: 5% to 95% (No condensation)

Operating altitude

- S5748X-8Z-EI: 0~5km
- S5748X-8Z-SI: 0~3km
- S5732-16N4Z-EI: 0~5km
- S5732-16N4Z-SI: 0~3km
- S5724X-8Z-EI: 0~5km
- S5724X-8Z-SI: 0~3km

Power consumption

Worst case, all ports used, line-rate traffic

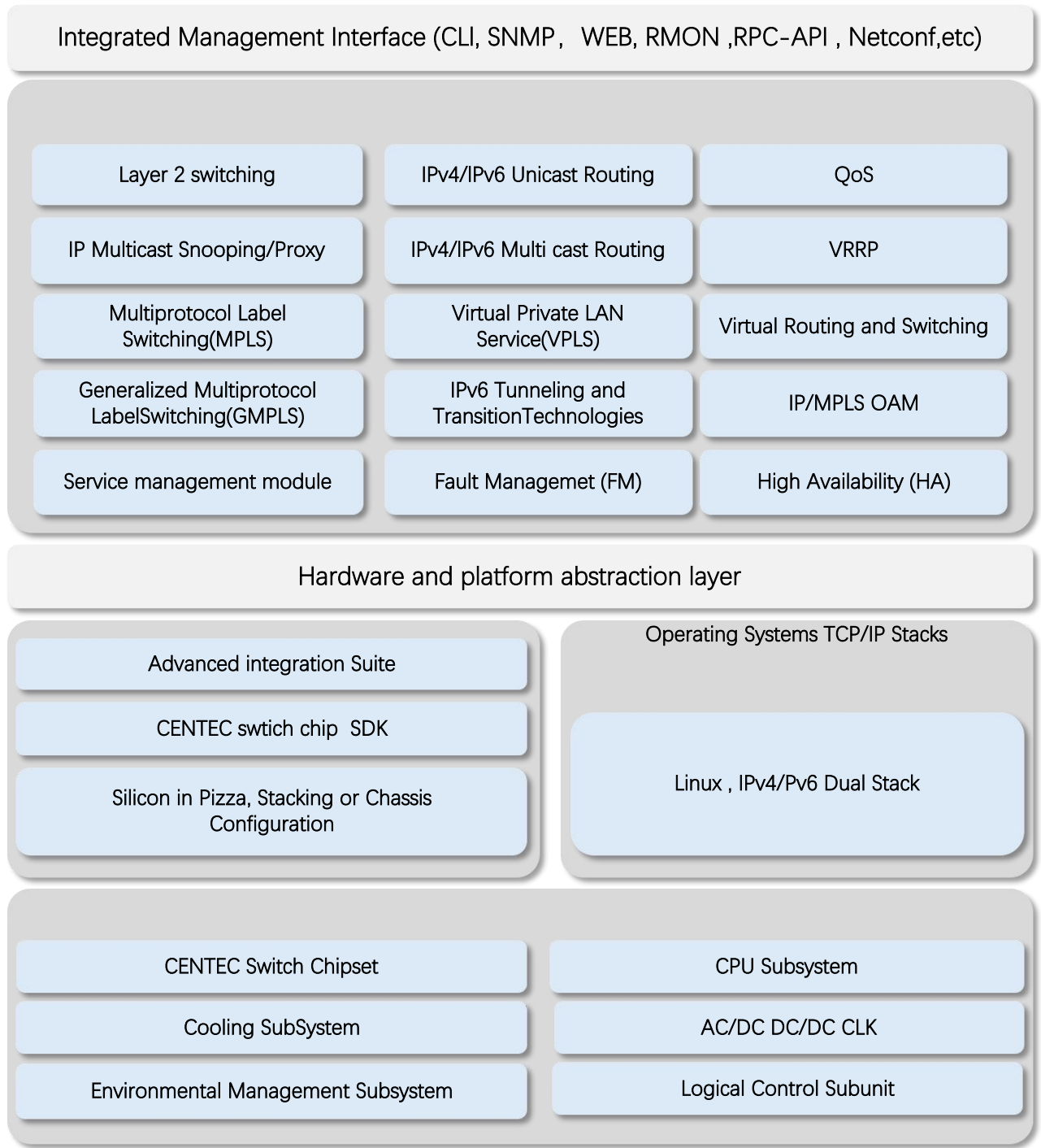
- S5748X-8Z-EI: 140.36W
- S5748X-8Z-SI: 138.38W
- S5732-16N4Z-EI: 122W
- S5732-16N4Z-SI: 119.68W
- S5724X-8Z-EI: 117W
- S5724X-8Z-SI: 98.7W

Typical power consumption

- S5748X-8Z-EI: 129.14W
- S5748X-8Z-SI: 128.26W
- S5724X-8Z-EI: 105W
- S5724X-8Z-SI: 91.74W
- S5732-16N4Z-EI: 110W
- S5732-16N4Z-SI: 108.02W

## S5700 Software Specifications

HOHUNET implements a unified software platform, and the software capabilities supported by the devices are listed in the document [‘HOS Software features’](#) .



All HOHUNET switches use a normalized software platform and image package file  
Unified software version iteration plan  
Unified user experience

Ordering Information

S5700 Series Switches

Item	Description
S5748X-8Z-EI	10G Data Center Switch with 48*10G SFP+, 8*100G QSFP28, Dual power supply modules, 4 hot-swap fan modules
S5748X-8Z-SI	10G Enterprise and Campus Network Switch with 48*10G SFP+, 8*100G QSFP28, Fixed single power supply, 4 Fixed Fans
S5732-16N4Z-EI	10G Data Center Switch with 32*10G SFP+, 16*10G/25G SFP28, 4*100G QSFP28, Dual power supply modules, 2 hot-swap fan modules
S5732-16N4Z-SI	10G Data Center Switch with 32*10G SFP+, 16*10G/25G SFP28, 4*100G QSFP28, Fixed single power supply, 4 Fixed Fans
S5724X-8Z-EI	10G Data Center Switch with 24*10G SFP+, 8*100G QSFP28, Dual power supply modules, 2 hot-swap fan modules
S5724X-8Z-SI	10G Enterprise and Campus Network Switch with 24*10G SFP+, 8*100G QSFP28, Fixed single power supply, 4 Fixed Fans

AC/DC Power Supplies use for S5700 Series EI model

Items	Description
PSU-350-AC-AFO	S5700 Series 350W AC power supply (front-to-back airflow)
PSU-550-DC-AFO	S5700 Series 550W DC power supply (front-to-back airflow)
PSU-550-AC-AFO	S5700 Series 550W AC POE power supply (front-to-back airflow)
PSU-550-DC-AFO	S5700 Series 550W DC POE power supply (front-to-back airflow)



Software Licenses

Items	Description
Software License	EB, Basic L3 software features, Preinstalled on SI models
Software License	MS, L3 enhance features software license key, Preinstalled on EI models
Software License	MA, MPLS features software license key
Software License	ST, Stacking feature software license key

Accessory of S5700 Series

Items	Front Mounting	Rear Mounting	Screw	Power Cord	Console (RS232 to RJ45)
S5748X-8Z-EI	2	2	14	2	1
S5748X-8Z-SI	2	/	14	1	1
S5732-16N4Z-EI	2	2	14	2	1
S5732-16N4Z-SI	2	/	14	1	1
S5724X-8Z-EI	2	2	14	2	1
S5724X-8Z-SI	2	/	14	1	1

## About HOHUNET:

HOHUNET was established in 2015 as a technology-oriented company specializing in the independent development of switch products based on domestic chips. With the continuous evolution of chip technology, HOHUNET has launched a range of differentiated products based on this chip platform. Currently, the company's product line covers a range from 1G to 800G and can be used in scenarios such as enterprise networks, carrier networks, data centers, and AI computing power. Currently, the main cooperation model for the company is OEM/ODM, dedicated to providing customers with flexible and end-to-end customized products and technical consulting services. Becoming the most trusted business partner for customers has always been the company's mission and principle.

## Contact us:

Shenzhen Haohu Network Technology Co.,Ltd

Headquarter Address:

Lining Center Building, Nanshan Hi-Tech Park, Nanshan, Shenzhen, Guangdong, China

Corporate and Sales Email: [business@hohUNET.com](mailto:business@hohUNET.com)

Telephone: 0086-755-26418565

Website: [www.hohUNET.com](http://www.hohUNET.com)

