

S4600 SERIES SWITCHES

DATASHEET

Flexible Campus and Enterprise Switch

Version: V1.2

Release Date: 2025/12/17

Product Overview

The S4600 series switches are designed with the domestically produced new generation switch chip [VastLakes Series Chip platform](#). They support ports of various speeds, provide full Gigabit access (PoE, non-PoE) and flexible uplink data interaction capabilities, support a variety of switch layer 3 features, ensure network security, high efficiency and energy saving, and are suitable for access scenarios such as e-sports networks and SMBs.



Key Features of the S4600 Series Switches

- Support 5G Multi-Gigabit ports and various uplink ports to meet different network requirements.
- PoE++ provide max 90W power of ports.
- Rich L2/L3 features such as VLAN, IGMP Snooping, LACP, OSPF, VRRP, ACL, DHCP etc.
- Support CLI/WEB/SNMP/SSH for flexible operation.

The S4600 series switches provide various power supply solutions for customers choosing. Generally, air flow of S4600 series is front to back (AFO), and some of models can do customization of back to front (AFI) airflow.

Table 1: Feasible PSU and airflow of S4600 Series

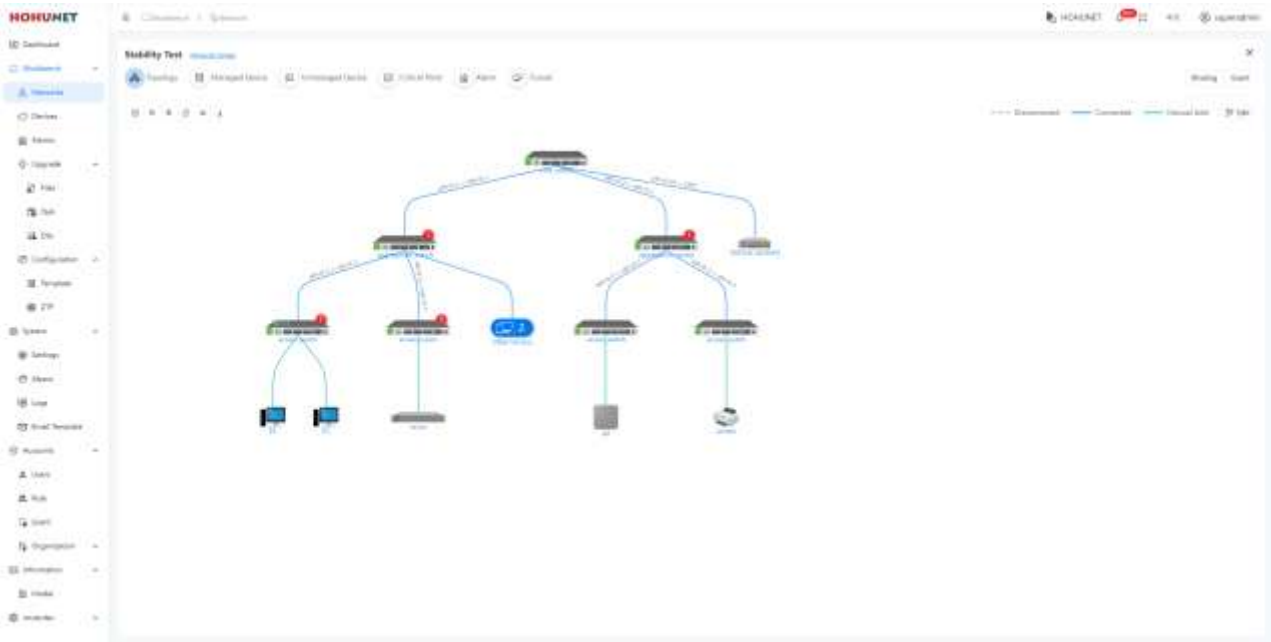
Items	AC	DC	PoE Ports	AFO	AFI	Power Input	FAN
S4648T-4Z-SI	○	X	X	○	X	1	6
S4648T-4N2Z-SI	○	X	X	○	X	1	6

Table 1: Feasible PSU and airflow of S4600 Series

Items	AC	DC	PoE Ports	AFO	AFI	Power Input	FAN
S4634T-1X2Z-SI	○	X	X	○	X	1	4
S4624T-2Z-EI	○	○	X	○	X	2	2 x 2
S4624P-2Z-EI	○	X	24 PoE++	○	X	2	2 x 2
S4624T-8N-EI	○	○	X	○	X	2	2 x 2
S4624P-8N-EI	○	○	24 PoE++	○	X	2	2 x 2

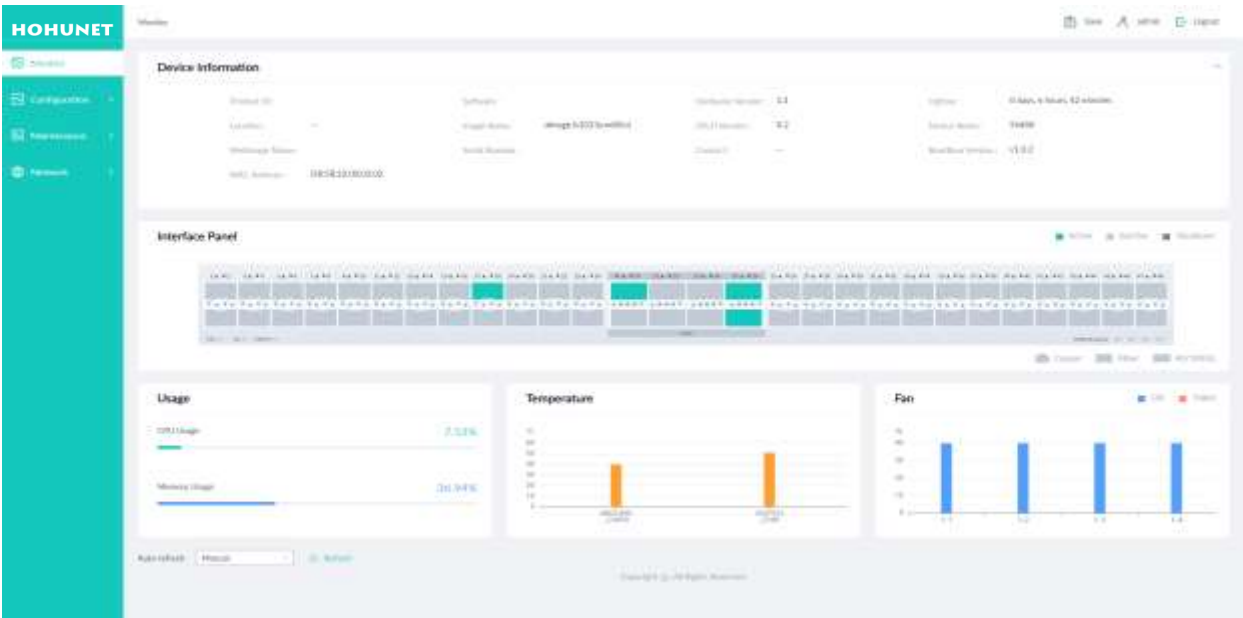
The S4600 Series switches support varied management ways, include console port / in-band network ports / out-of-band network port. Support SNMP v1/v2/v3, Support CLI (Command Line Interface), web management, Telnet and FTP connection. Support OAM to make management more convenient, and support SSH2.0, SSL, etc. to ensure security of management.

Moreover, leveraging its profound technical expertise and in-depth understanding of campus and enterprise networking needs, Hohunet has launched the Da Hu Cloud Management System (DHCS). It enhances network management and maintenance efficiency, reduces costs, elevates management intelligence, and delivers a faster, smarter, more secure and reliable network to better meet user requirements.



Visual WEB GUI

The S4600 series allows you to quickly configure common configuration items using a visual WEB GUI, which lowers the application threshold for users.



The S4600 family of Ethernet switches consists of the following models:

Table 2: Family of the S4600 Series switches

Models	Ethernet Ports	Management	PSU 1/PSU 2	Cooling
S4648T-4Z-SI	48 x 100M/1G/2.5G/5G Base-T, 4 x 100G QSFP28	Console: RJ45 to RS232 Ethernet: 1G Port Storage: USB	200W fixed	6 x Fixed Fan (front-to-back airflow)
S4648T-4N2Z-SI	48 x 100M/1G/2.5G/5G Base-T, 4 x 10G/25G SFP28, 2 x 100G QSFP28	Console: RJ45 to RS232 Ethernet: 1G Port Storage: USB	200W fixed	6 x Fixed Fan (front-to-back airflow)
S4634T-1X2Z-SI	34 x 100M/1G/2.5G/5G Base-T, 1 x 10G SFP+, 2 x 100G QSFP28	Console: RJ45 to RS232 Ethernet: 1G Port Storage: USB	200W fixed	4 x Fixed Fan (front-to-back airflow)
S4624T-2Z-EI	24 x 100M/1G/2.5G/5G Base-T, 2 x 100G QSFP28	Console: RJ45 to RS232 Ethernet: 1G Port Storage: USB	350W/350W CRPS	2 x Fan modules (front-to-back airflow)
S4624P-2Z-EI	24 x 100M/1G/2.5G/5G Base-T (PoE++, per port 90W), 2 x 100G QSFP28	Console: RJ45 to RS232 Ethernet: 1G Port Storage: USB	600W/600W CRPS	2 x Fan modules (front-to-back airflow)
S4624T-8N-EI	24 x 100M/1G/2.5G/5G Base-T, 8 x 25G SFP28	Console: RJ45 to RS232 Ethernet: 1G Port Storage: USB	350W/350W CRPS	2 x Fan modules (front-to-back airflow)
S4624P-8N-EI	24 x 100M/1G/2.5G/5G Base-T (PoE++ per port 90W), 8 x 25G SFP28	Console: RJ45 to RS232 Ethernet: 1G Port Storage: USB	600W/600W CRPS	2 x Fan modules (front-to-back airflow)

S4600 Physical Specifications

Packet Switch Capacity

- S4648T-4Z-SI: 1280Gbps (bidirectional)
- S4648T-4N2Z-SI: 1080Gbps (bidirectional)
- S4634T-1X2Z-SI: 760Gbps (bidirectional)
- S4624T-2Z-EI: 640Gbps (bidirectional)
- S4624P-2Z-EI: 640Gbps (bidirectional)
- S4624T-8N-EI: 640Gbps (bidirectional)
- S4624P-8N-EI: 640Gbps (bidirectional)

Layer 2/Layer 3 Throughput (Mpps)

- S4648T-4Z-SI: 1904.64 Mpps (bidirectional)
- S4648T-4N2Z-SI: 1607.08 Mpps (bidirectional)
- S4634T-1X2Z-SI: 1130.88 Mpps (bidirectional)
- S4624T-2Z-EI: 952.32Mpps (bidirectional)
- S4624P-2Z-EI: 952.32Mpps (bidirectional)
- S4624T-8N-EI: 952.32Mpps (bidirectional)
- S4624P-8N-EI: 952.32Mpps (bidirectional)

Dimensions (W x H x D) without Package

- S4648T-4Z-SI: 442×44×371mm
- S4648T-4N2Z-SI: 442×44×371mm
- S4634T-1X2Z-SI: 442×44×408mm
- S4624T-2Z-EI: 442×44×357mm
- S4624P-2Z-EI: 442×44×357mm
- S4624T-8N-EI: 442×44×357mm
- S4624P-8N-EI: 442×44×357mm

Dimensions (W x H x D) with Package

- S4648T-4Z-SI: 557×150×495mm
- S4648T-4N2Z-SI: 557×150×495mm
- S4634T-1X2Z-SI: 557×150×495mm
- S4624T-2Z-EI: 557×150×495mm
- S4624P-2Z-EI: 557×150×495mm
- S4624T-8N-EI: 557×150×495mm
- S4624P-8N-EI: 557×150×495mm

Cooling [CFM] - Total maximum airflow

- S4648T-4Z-SI: 69.72
- S4648T-4N2Z-SI: 69.72
- S4634T-1X2Z-SI: 46.48
- S4624T-2Z-EI: 68.76
- S4624P-2Z-EI: 72.78
- S4624T-8N-EI: 68.76
- S4624P-8N-EI: 72.78

Weight (Net/Gross)

- S4648T-4Z-SI: 5.21KG/7.9KG
- S4648T-4N2Z-SI: 5.21KG/7.9KG
- S4634T-1X2Z-SI: 4.6KG/7.2KG
- S4624T-2Z-EI: 6.96KG/9.5KG
- S4624P-2Z-EI: 6.96KG/9.5KG
- S4624T-8N-EI: 6.96KG/9.5KG
- S4624P-8N-EI: 6.96KG/9.5KG

MTBF(Hours)

- S4648T-4Z-SI: ≥ 70000h (~8.0 Years)
- S4648T-4N2Z-SI: ≥ 70000h (~8.0 Years)
- S4634T-1X2Z-SI: ≥ 70000h (~8.0 Years)
- S4624T-2Z-EI: ≥ 90000h (~10.3 Years)
- S4624P-2Z-EI: ≥ 90000h (~10.3 Years)
- S4624T-8N-EI: ≥ 90000h (~10.3 Years)
- S4624P-8N-EI: ≥ 90000h (~10.3 Years)

PoE Power Budget

- S4624P-2Z-EI: 1000W
- S4624P-8N-EI: 1000W

S4600 Physical Specifications

Operating altitude

- S4648T-4Z-SI: 0~3km
- S4648T-4N2Z-SI: 0~3km
- S4634T-1X2Z-SI: 0~3km
- S4624T-2Z-EI: 0~5km
- S4624P-2Z-EI: 0~5km
- S4624T-8N-EI: 0~5km
- S4624P-8N-EI: 0~5km

Temperature alarm

- Alarm threshold: 50°C

Memory

- eMMC: 8GB
- DRAM: 2GB

Environmental ranges

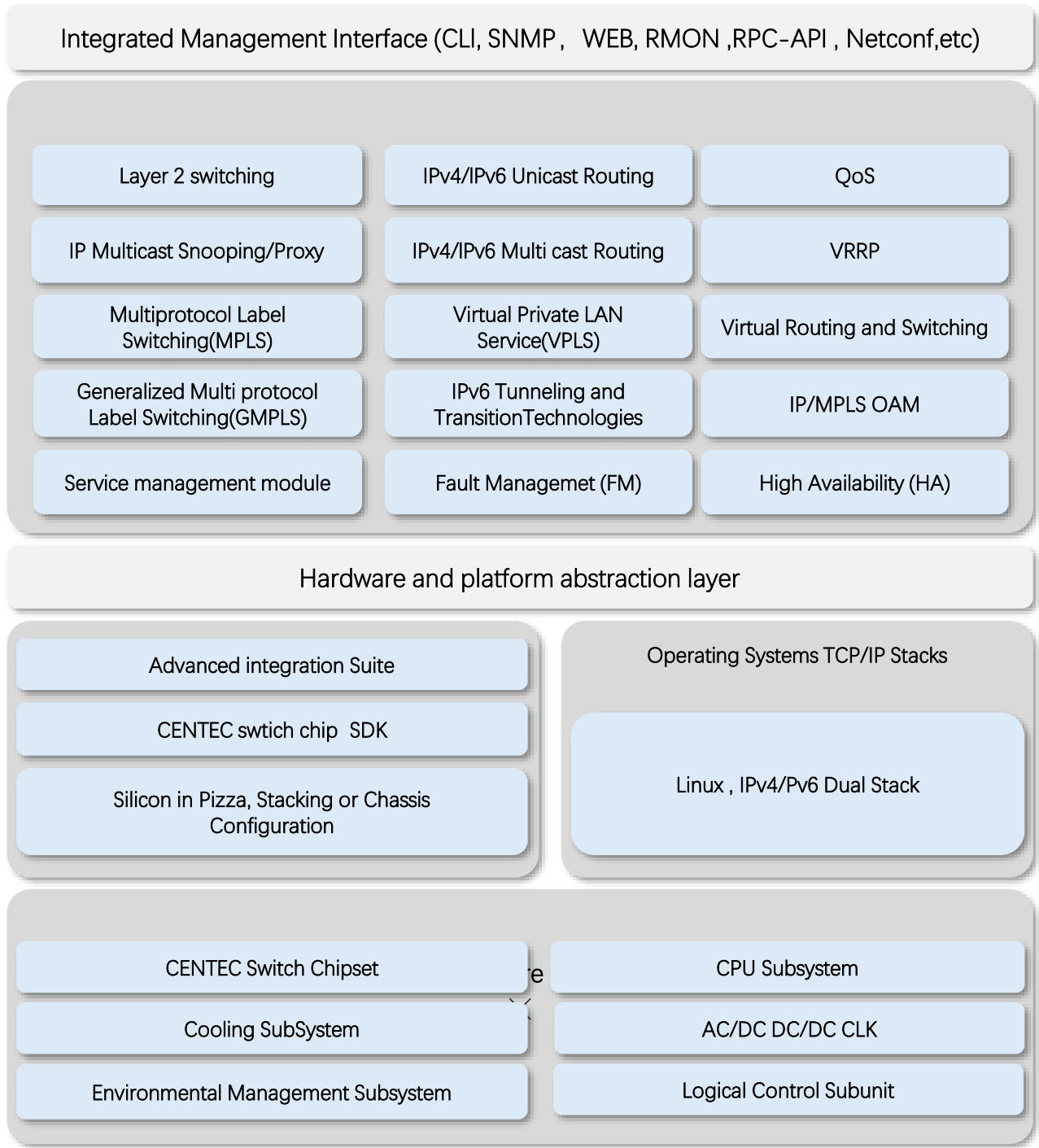
- Operating temperature: 0°C to 45°C
- Storage temperature: -40°C to 70°C
- Running Humidity: 10% to 90% (No condensation)
- Store Humidity: 5 to 95% (No condensation)
- Operating altitude: ≤5000m

CPU

- Dualcore, ARM A53(1.2GHz)

S4600 Software Specifications

HOHUNET implements a unified software platform, and the software capabilities supported by the devices are listed in the document [‘HOS Software features’](#) .



All HOHUNET switches use a normalized software platform and image package file
Unified software version iteration plan
Unified user experience

Ordering Information

S4600 Series Switches

Items	Description
S4648T-4Z-SI	5G enterprise switch, with 48 x 100M/1G/2.5G/5G Base-T, 4 x 100G QSFP28, 1 x Fixed power supply, 6 x Fixed smart fan
S4648T-4N2Z-SI	5G enterprise switch, with 48 x 100M/1G/2.5G/5G Base-T, 4 x 10G/25G SFP28, 2 x 100G QSFP28, 1 x Fixed power supply, 6 x Fixed smart fan
S4634T-1X2Z-SI	5G enterprise switch, with 34 x 100M/1G/2.5G/5G Base-T, 1 x 10G SFP+, 2 x 100G QSFP28, 1 x Fixed power supply, 4 x Fixed smart fan
S4624T-2Z-EI	5G enterprise switch, with 24 x 100M/1G/2.5G/5G Base-T, 2 x 100G QSFP28, 2 x power supply modules, 2 x Hot-swappable fan modules.
S4624P-2Z-EI	5G enterprise switch, with 24 x 100M/1G/2.5G/5G Base-T (PoE++ 90W), 2 x 100G QSFP28, 2 x power supply modules, 2 x Hot-swappable fan modules.
S4624T-8N-EI	5G enterprise switch, with 24 x 100M/1G/2.5G/5G Base-T, 8 x 25G/10G SFP28, 2 x power supply modules, 2 x Hot-swappable fan modules.
S4624P-8N-EI	5G enterprise switch, with 24 x 100M/1G/2.5G/5G Base-T (PoE++ 90W), 8 x 25G/10G SFP28, 2 x power supply modules, 2 x Hot-swappable fan modules.

Software Licenses

Items	Description
Software License	EB, Basic L3 software features, Preinstalled on SI models
Software License	MS, L3 enhance features software license key, Preinstalled on EI models
Software License	MA, MPLS features software license key
Software License	ST, Stacking feature software license key

AC/DC Power Supplies use for (S4624T-2Z-EI, S4624P-2Z-EI, S4624T-8N-EI, S4624P-8N-EI) Switches.

Items	Description
PSU-600-AC-AFO	S4600 Series 600 W AC power supply (front-to-back airflow)
PSU-900-AC-AFO	S4600 Series 900 W AC power supply (front-to-back airflow)
PSU-1200-AC-AFO	S4600 Series 1200 W AC power supply (front-to-back airflow)
PSU-2000-AC-AFO	S4600 Series 2000 W AC power supply (front-to-back airflow)

Accessory of S4600 Series

Items	Front Mounting	Rear Mounting	Rear Mounting Extension	Rack Rail	M4 Screw	Power Cord	Ground Cord
S4648T-4Z-SI	2	/	/	12	1	1	1
S4648T-4N2Z-SI	2	/	/	12	1	1	1
S4634T-1X2Z-SI	2	/	/	12	1	1	1
S4624T-2Z-EI	2	2	2	12	2	1	1
S4624P-2Z-EI	2	2	2	12	2	1	1
S4624T-8N-EI	2	2	2	12	2	1	1
S4624P-8N-EI	2	2	2	12	2	1	1

About HOHUNET:

HOHUNET was established in 2015 as a technology-oriented company specializing in the independent development of switch products based on domestic chips. With the continuous evolution of chip technology, HOHUNET has launched a range of differentiated products based on this chip platform. Currently, the company's product line covers a range from 1G to 800G and can be used in scenarios such as enterprise networks, carrier networks, data centers, and AI computing power. Currently, the main cooperation model for the company is OEM/ODM, dedicated to providing customers with flexible and end-to-end customized products and technical consulting services. Becoming the most trusted business partner for customers has always been the company's mission and principle.

Contact us:

Shenzhen Haohu Network Technology Co.,Ltd

Headquarter Address:

Lining Center Building, Nanshan Hi-Tech Park, Nanshan, Shenzhen, Guangdong, China

Corporate and Sales Email: business@hohunet.com

Telephone: 0086-755-26418565

Website: www.hohunet.com

