

## DynamicDuo SERIES SWITCHES

### DATASHEET

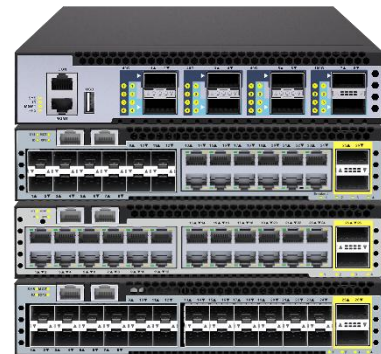
Flexible Campus and Enterprise Switch

Version: V1.1

Release Date: 2024/10/14

### Product Overview

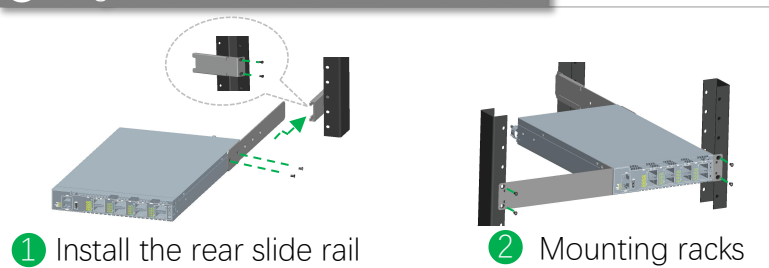
The DynamicDuo Series switches designed on a domestic popular switch chip, which called VastLakes Series Chip platform with 10G/40G/100G high speed ports and rich features, these switches will perfectly meets the requirements of Campus, Enterprise, Data Center, and SDVoE networks.



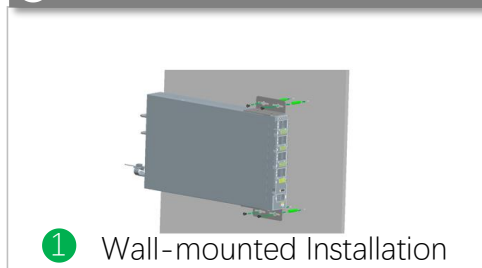
### Key features of the DynamicDuo Series Switches

- Flexible installation and deployment methods

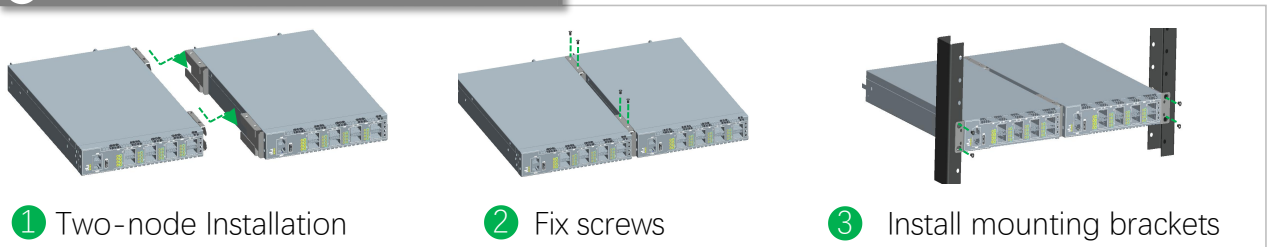
#### ① Single-cabinet Installation with 1U



#### ② 1U Wall-mounted Installation

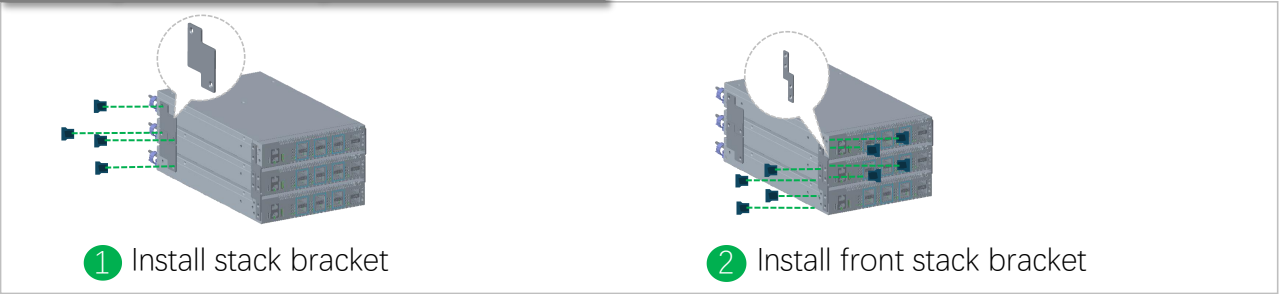


#### ③ Two-node Installation in 1U Cabinet

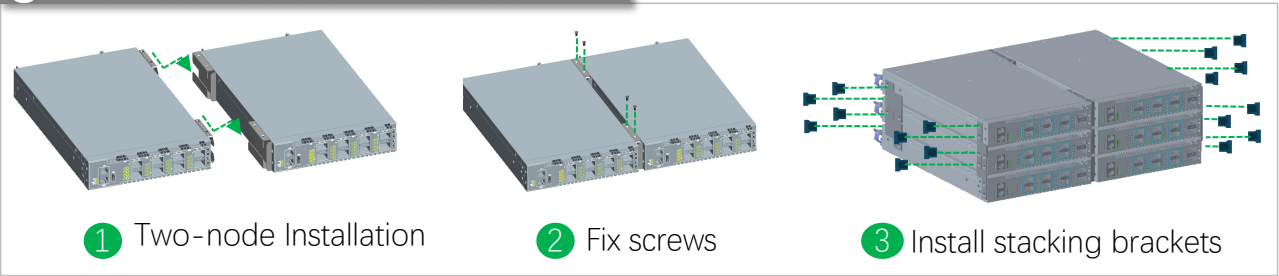


- Flexible and Diverse Deployment modes, with 1U for Dual Physical Redundancy

4 Single-row stacking without cabinets



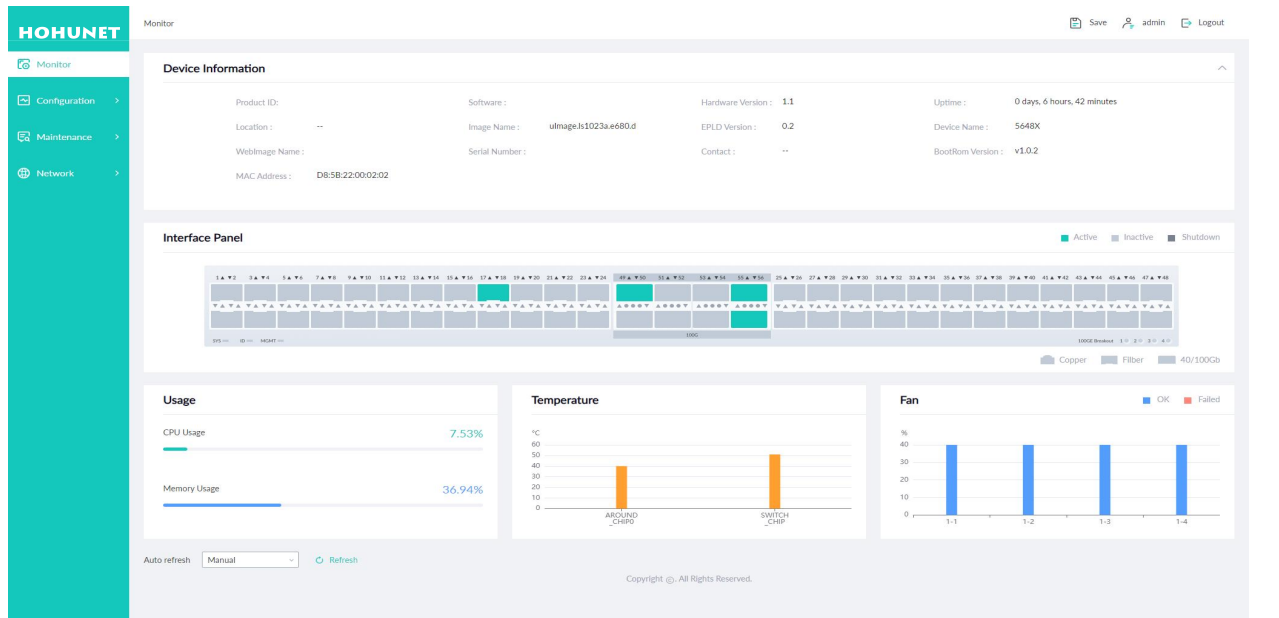
5 Two-node Installation without Cabinet



- Visual Web GUI and multiple management Methods

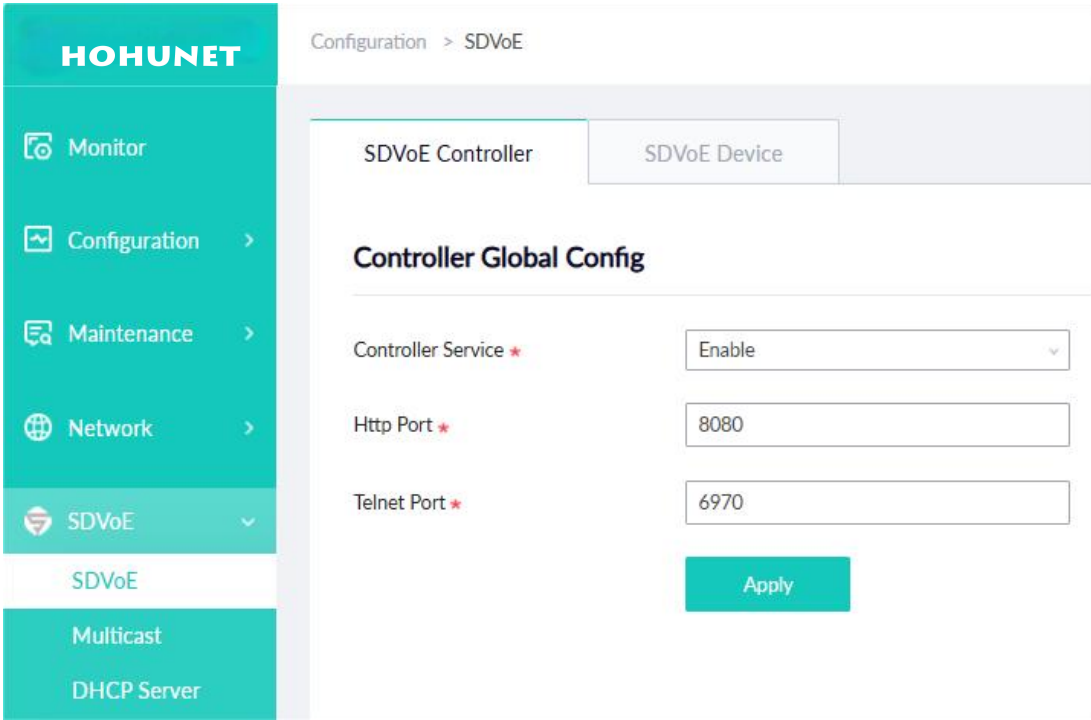
HOS allows you to quickly configure common configuration items using a visual WEB GUI, which lowers the application threshold for users.

The DynamicDuo Series switches support varied management ways, include console port / in-band network ports / out-of-band network port. Support SNMP v1/v2/v3, Support CLI (Command Line Interface), web management, Telnet and FTP connection. Support OAM to make management more convenient, and support SSH2.0, etc. to ensure security of management.

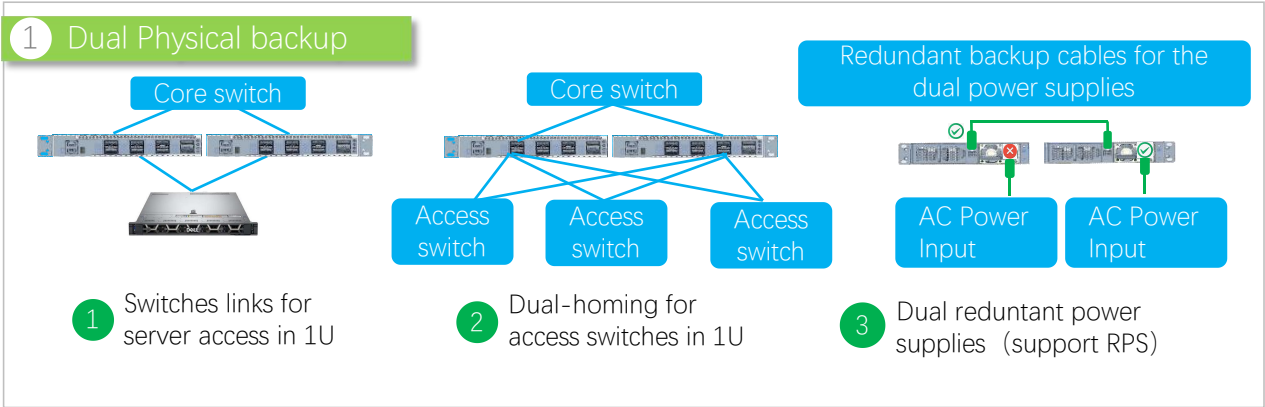


- Integrate SDVoE API Server

SDVoE switches built-in SDVoE API Server, users no need to purchase additional SDVoE controller, simplifying the network architecture. The web page is simple and easy to operate, without complicated steps, only the following three simple parts: SDVoE, Multicast, DHCP Server, you can complete the relevant configuration of SDVoE, and reduce the overall time cost and project cost of users.



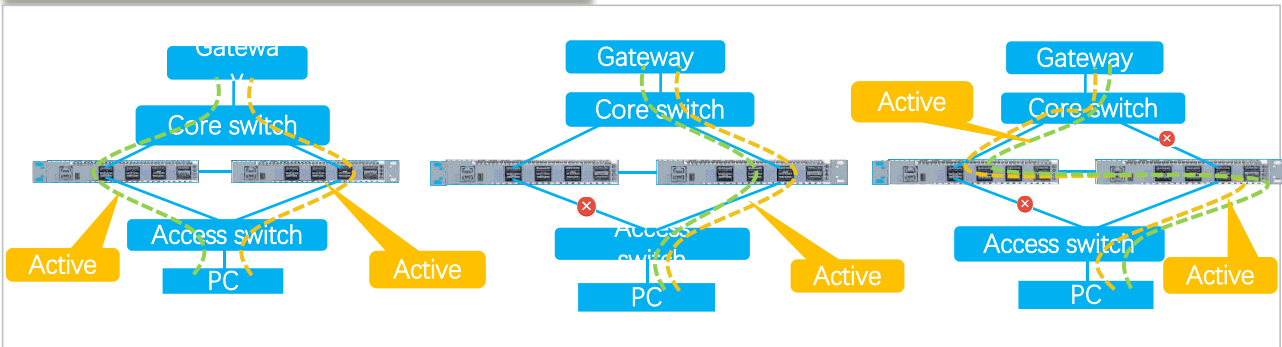
- Supports Multiple Dual-system Physical Hot Backup



- Support MLAG Active-active dual-system hot backup

Support MLAG (Multi-Chassis Link Aggregation) to aggregate links across different devices. MLAG can build an Active-Active system to improve the reliability of the network links from single board grade to device grade. MLAG use a peer link between to devices to aggregate two devices and make them as one device logically. Ports of two different devices join the aggregate ports together and all port can transmit the data traffic. MLAG need to management the device respectively, but the configurations are easier than stacking, reboot is NOT required after MLAG is configured. Forwarding and configuring are processing on local device, in normal condition the traffic do NOT transmit trough the peer link, the bandwidth of peer link is not the bottleneck of the network and the latency is low.

2 MLAG Active-active dual-system hot backup



The DynamicDuo Series switches provide various power supply solutions for customers choosing, fixed single power supply, and redundant hot-swappable power supplies (AC and DC are both available). The fan solutions also have 1 bay with field replaceable fan modules and build in fans. Generally, air flow of DynamicDuo Series is front to back (AFO), and some of models can do customization of back to front (AFI) airflow.

Table 1: Feasible PSU and airflow of DynamicDuo Series

Items	AC	DC	AFO	AFI	Power Input	FAN
S7606X-2Z-EI	○	○	○	○	1	1
S7606X-2Z-SI	○	X	○	X	1	2
S5624XH-2Z-EI	○	○	○	○	1	1
S5624XH-2Z-SI	○	X	○	X	1	2
S5612X12TH-2Z-EI	○	○	○	○	1	1
S5612X12TH-2Z-SI	○	X	○	X	1	3
S5624TH-2Z-EI	○	○	○	○	1	1
S5624TH-2Z-SI	○	X	○	X	1	3

The DynamicDuo family of Ethernet switches consists of the following models:

**Table 2: Family of the DynamicDuo Series switches**

Models	Ethernet Ports	Management	PSU 1/PSU 2	Cooling
S7606X-2Z-EI	6 x 40G QSFP+ + 2 x 100G QSFP28	Console: RJ45 RS232 Ethernet: 1G Port Storage: USB	350W CRPS	1 x hot-swappable Fan Module (front-to-back airflow)
S7606X-2Z-SI	6 x 40G QSFP+ + 2 x 100G QSFP28	Console: RJ45 RS232 Ethernet: 1G Port Storage: USB	150W Fixed single power supply	2 x fixed fans (front-to-back airflow)
S5624XH-2Z-EI	24 x 10G SFP+ +2 x 100G QSFP28	Console: RJ45 RS232 Ethernet: 1G Port	550W CRPS	1 x hot-swappable Fan Module (front-to-back airflow)
S5624XH-2Z-SI	24 x 10G SFP+ + 2 x 100G QSFP28	Console: RJ45 RS232 Ethernet: 1G Port	150W Fixed single power supply	2 x fixed fans (front-to-back airflow)
S5612X12TH-2Z-EI	12 x 10G SFP+ + 12 x 10G Base-T + 2 x 100G QSFP28	Console: RJ45 RS232 Ethernet: 1G Port	350W CRPS	1 x hot-swappable Fan Module (front-to-back airflow)
S5612X12TH-2Z-SI	12 x 10G SFP+ + 12 x 10G Base-T + 2 x 100G QSFP28	Console: RJ45 RS232 Ethernet: 1G Port	Fixed single power supply	3 x fixed fans (front-to-back airflow)
S5624TH-2Z-EI	24 x 10G Base-T + 2 x 100G QSFP28	Console: RJ45 RS232 Ethernet: 1G Port	350W CRPS	1 x hot-swappable Fan Module (front-to-back airflow)
S5624TH-2Z-SI	24 x 10G Base-T + 2 x 100G QSFP28	Console: RJ45 RS232 Ethernet: 1G Port	300W Fixed single power supply	3 x fixed fans (front-to-back airflow)

DynamicDuo Physical Specifications

Packet Switch capacity

- S7606X-2Z-El: 880 Gbps (bidirectional)
- S7606X-2Z-Sl: 880 Gbps (bidirectional)
- S5624XH-2Z-El: 880 Gbps (bidirectional)
- S5624XH-2Z-Sl: 880 Gbps (bidirectional)
- S5612X12TH-2Z-El: 880 Gbps (bidirectional)
- S5612X12TH-2Z-Sl: 880 Gbps (bidirectional)
- S5624TH-2Z-El: 880 Gbps (bidirectional)
- S5624TH-2Z-Sl: 880 Gbps (bidirectional)

Cooling [CFM]

- S7606X-2Z-El: 34.38
- S7606X-2Z-Sl: 23.24
- S5624XH-2Z-El: 34.38
- S5624XH-2Z-Sl: 23.24
- S5612X12TH-2Z-El: 38.49
- S5624TH-2Z-El: 38.49
- S5624TH-2Z-Sl: 41.43

Layer 2/Layer 3 Throughput

- S7606X-2Z-El: 1309.44Mpps (bidirectional)
- S7606X-2Z-Sl: 1309.44Mpps (bidirectional)
- S5624XH-2Z-El: 1309.44Mpps (bidirectional)
- S5624XH-2Z-Sl: 1309.44Mpps (bidirectional)
- S5612X12TH-2Z-El: 1309.44Mpps (bidirectional)
- S5612X12TH-2Z-Sl: 1309.44Mpps (bidirectional)
- S5624TH-2Z-El: 1309.44Mpps (bidirectional)
- S5624TH-2Z-Sl: 1309.44Mpps (bidirectional)

Acoustic in dBA

- S7606X-2Z-El: 43.67 dB
- S7606X-2Z-Sl: 47.1 dB
- S5624XH-2Z-El: 39.1 dB
- S5624XH-2Z-Sl: 46.87 dB
- S5612X12TH-2Z-El: 49.4 dB
- S5624TH-2Z-El: 45.47 dB
- S5624TH-2Z-Sl: 39.1 dB

Power consumption

Worst case, all ports used, line-rate traffic

- S7606X-2Z-El: 56 W
- S5624XH-2Z-El: 64 W
- S5624XH-2Z-Sl: 38 W
- S5612X12TH-2Z-El: 81 W
- S5624TH-2Z-El: 101 W
- S5624TH-2Z-Sl: 98 W

Typical Power consumption

- S7606X-2Z-El: 55 W
- S5624XH-2Z-El: 39 W
- S5624XH-2Z-Sl: 36 W
- S5612X12TH-2Z-El: 77 W
- S5624TH-2Z-El: 100 W
- S5624TH-2Z-Sl: 94 W

DynamicDuo Physical Specifications

Dimensions (W x H x D) without package

- S7606X-2Z-El: 21.5x4.4x35.5cm
- S7606X-2Z-Sl: 21.5x4.4x35.5cm
- S5624XH-2Z-El: 21.5x4.4x35.5cm
- S5624XH-2Z-Sl: 21.5x4.4x35.5cm
- S5612X12TH-2Z-El: 21.5x4.4x35.6cm
- S5612X12TH-2Z-Sl: 21.5x4.4x35.6cm
- S5624TH-2Z-El: 21.5x4.4x35.6cm
- S5624TH-2Z-Sl: 21.5x4.4x35.6cm

Dimensions (W x H x D) with package

- S7606X-2Z-El: 55.7x15x49.5cm
- S7606X-2Z-Sl: 55.7x15x49.5cm
- S5624XH-2Z-El: 55.7x15x49.5cm
- S5624XH-2Z-Sl: 55.7x15x49.5cm
- S5612X12TH-2Z-El: 55.7x15x49.5cm
- S5612X12TH-2Z-Sl: 55.7x15x49.5cm
- S5624TH-2Z-El: 55.7x15x49.5cm
- S5624TH-2Z-Sl: 55.7x15x49.5cm

Environmental ranges

- Operating temperature: 0°C to 40°C
- Storage temperature: -40°C to 70°C
- Running Humidity: 10% to 90% (No condensation)
- Store Humidity: 0 to 95% (No condensation)

Temperature alarm

- Alarm threshold: 50°C

Memory

- eMMC: 8GB on all models
- DRAM: 2GB on all models

MTBF

- S7606X-2Z-El: ≥90000H
- S7606X-2Z-Sl: ≥70000H
- S5624XH-2Z-El: ≥90000H
- S5624XH-2Z-Sl: ≥70000H
- S5612X12TH-2Z-El: ≥90000H
- S5612X12TH-2Z-Sl: ≥70000H
- S5624TH-2Z-El: ≥90000H
- S5624TH-2Z-Sl: ≥70000H

Operating altitude

- S7606X-2Z-El: ≤5000m
- S7606X-2Z-Sl: ≤3000m
- S5624XH-2Z-El: ≤5000m
- S5624XH-2Z-Sl: ≤3000m
- S5612X12TH-2Z-El: ≤5000m
- S5612X12TH-2Z-Sl: ≤5000m
- S5624TH-2Z-El: ≤5000m
- S5624TH-2Z-Sl: ≤5000m

Weight (Net Weight/Gross Weight)

- S7606X-2Z-El: 3.3kg/6.2kg
- S7606X-2Z-Sl: 3kg/6kg
- S5624XH-2Z-El: 3.5kg/7.5kg
- S5624XH-2Z-Sl: 2.7kg/5kg
- S5612X12TH-2Z-El: 3.5kg/5kg
- S5612X12TH-2Z-Sl: 3kg/5kg
- S5624TH-2Z-El: 3.5kg/4.4kg
- S5624TH-2Z-Sl: 3kg/4kg

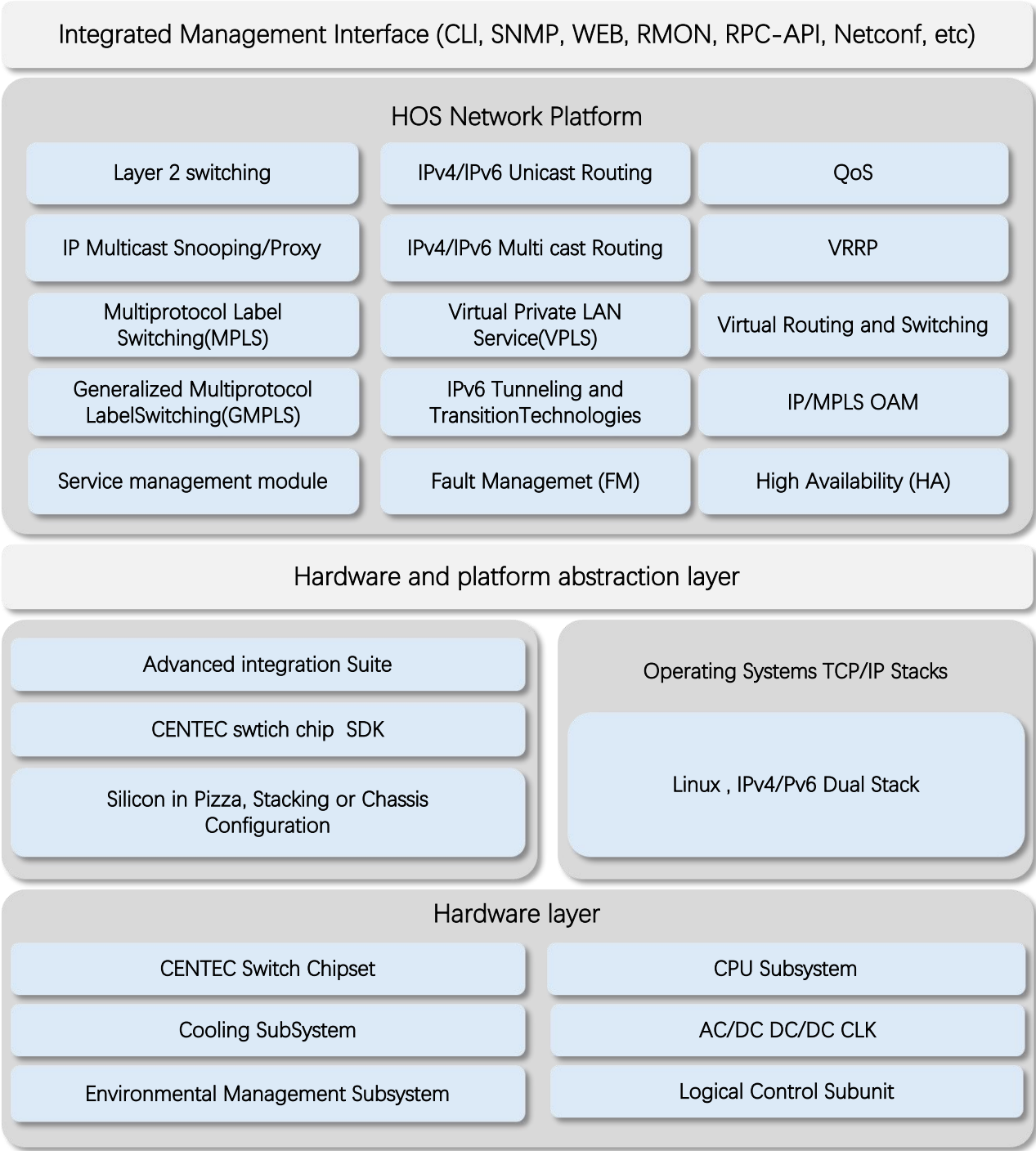
CPU

- Dual-core processor, ARM A53 on all models



## DynamicDuo Software Specifications

HOHUNET implements a unified software platform, and the software capabilities supported by the devices are listed in the document [‘HOS Software features’](#) .



- \* All HOHUNET switches use a normalized software platform and image package file
- \* Unified software version iteration plan
- \* Unified user experience

Ordering Information

DynamicDuo Series Switches

Items	Description
S7606X-2Z-EI	40G enterprise switch, with 6*40G QSFP+ One power supply module(C13), 1 hot-swap fan module.
S7606X-2Z-SI	40G enterprise switch, with 6*40G QSFP+ One fixed power supply(C13), 2 fixed Fans.
S5624XH-2Z-EI	10G enterprise switch, with 24*10G SFP+ , 2*100G QSFP28, One power supply module(C13), 2 hot-swap fan modules.
S5624XH-2Z-SI	10G enterprise switch, with 24*10G SFP+ , 2*100G QSFP28, One fixed Single power supply(C13), 2 fixed Fans.
S5612X12TH-2Z-EI	10G enterprise switch, with 12*10G SFP+ , 12*10G Base-T , 2*100G QSFP28, One power supply module(C13), 1 hot-swap fan module
S5612X12TH-2Z-SI	10G enterprise switch, with 12*10G SFP+ , 12*10G Base-T , 2*100G QSFP28, One fixed Single power supply(C13), 3 fixed Fans.
S5624TH-2Z-EI	10G enterprise switch, with 24*10G Base-T , 2*100G QSFP28, One power supply module(C13), 2 hot-swap fan modules.
S5624TH-2Z-SI	10G enterprise switch, with 24*10G Base-T , 2*100G QSFP28, One fixed Single power supply(C13), 2 fixed Fans.

AC/DC Power Supplies use for S7606X-2Z-EI, S5624XH-2Z-EI, S5612X12TH-2Z-EI, S5624TH-2Z-EI.

Items	Description
PSU-350-AC-AFO	DynamicDuo Series 350 W AC power supply (front-to-back airflow)
PSU-550-DC-AFO	DynamicDuo Series 550 W DC power supply (front-to-back airflow)

Software Licenses

Items	Description
Software License	EB, L3 features software license key, Preinstalled
Software License	MS, L3 enhance features software license key

Accessory of DynamicDuo Series

Items	Front Mounting Bracket-Short	Front Mounting Bracket-Long	Wall-Mounting Bracket	Rear Mounting Bracket Female	Rear Mounting Bracket Male	Middle Mounts Female	Middle Mounts -Male
S7606X-2Z-EI	1	1	2	1	1	1	1
S7606X-2Z-SI	1	1	0	0	0	1	1
S5624XH-2Z-EI	1	1	2	1	1	1	1
S5624XH-2Z-SI	2	0	0	0	0	1	1
S5612X12TH-2Z-EI	1	1	2	1	1	1	1
S5612X12TH-2Z-SI	1	1	0	0	0	1	1
S5624TH-2Z-EI	1	1	2	1	1	1	1
S5624TH-2Z-SI	1	1	0	0	0	1	1

Items	Grounding Cable	Power Cord	RPS Cord	Console Cable	M4 Screws	Stack bracket Front	Stack bracket Back
S7606X-2Z-EI	1	1	1	1	14	0	0
S7606X-2Z-SI	1	1	1	1	14	0	0
S5624XH-2Z-EI	1	1	1	1	14	2	2
S5624XH-2Z-SI	1	1	1	1	14	0	0
S5612X12TH-2Z-EI	1	1	1	1	14	2	2
S5612X12TH-2Z-SI	1	1	1	1	14	0	0
S5624TH-2Z-EI	1	1	1	1	14	2	2
S5624TH-2Z-SI	1	1	1	1	14	0	0

## About HOHUNET:

HOHUNET was established in 2015 as a technology-oriented company specializing in the independent development of switch products based on domestic chips. With the continuous evolution of chip technology, HOHUNET has launched a range of differentiated products based on this chip platform. Currently, the company's product line covers a range from 1G to 800G and can be used in scenarios such as enterprise networks, carrier networks, data centers, and AI computing power. Currently, the main cooperation model for the company is OEM/ODM, dedicated to providing customers with flexible and end-to-end customized products and technical consulting services. Becoming the most trusted business partner for customers has always been the company's mission and principle.

## Contact us:

Shenzhen Haohu Network Technology Co.,Ltd.

## Headquarter Address:

Lining Center Building, Nanshan Hi-Tech Park, Nanshan, Shenzhen, Guangdong, China

Corporate and Sales Email: [business@hohUNET.com](mailto:business@hohUNET.com)

Telephone: 0086-755-26418565

Website: [www.hohUNET.com](http://www.hohUNET.com)

