

S9500 SERIES SWITCHES

DATASHEET

HOHUNET

High Performance Data Center Switch

Version:V 1.2
Release Date:2025/12/20

Product Overview

The S9500 Series switches designed on a domestic new generation switch Chip, which called [SerdesX Series Chip platform](#). With 32 x 800G high speed ports and rich features, these switches will perfectly meets the requirements of supercomputing, Data Center, and AI/ML Networks.



Key features of the S9500 Series switches

- High-density 800G switch, 32*800G OSFP
- Redundant hot-swappable power and fans ensure continuous stability
- MPLS (label-switching-based) integrates IP flexibility and connection-oriented reliability, enabling isolated multi-service bearing, precise traffic scheduling, fast fault self-healing, and lower networking costs to meet multi-scenario efficient needs
- Support VXLAN/EVPN tunnel technology, unlimited data transmission
- RDMA end-to-end data forwarding, build a lossless network without packet loss
- Support MLAG, cross-device link aggregation technology

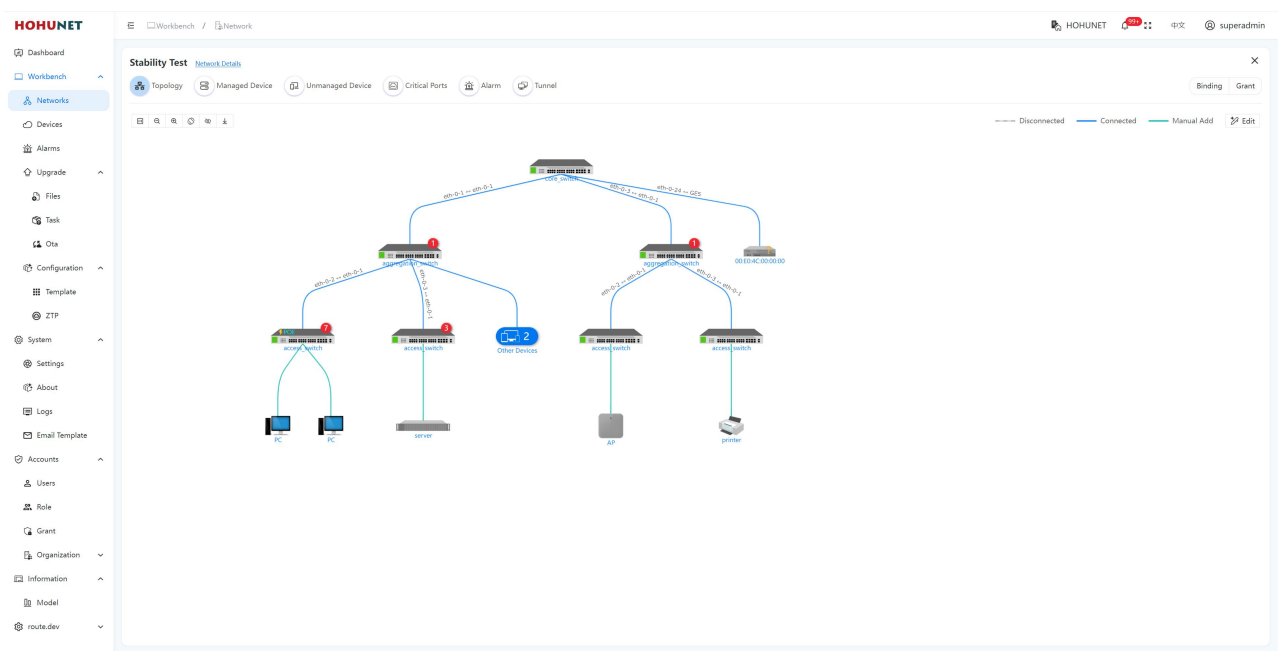
The S9500 Series switches provide redundant hot-swappable power supplies (AC and DC are both available) and 4 bays with Field replaceable fan modules. Generally, airflow of S9500 Series is front to rear (AFO), but a customization of rear to front (AFI) airflow is also acceptable.

Table 1: Feasible PSU and airflow of S9532

Items	AC	DC	AFO	AFI	Power Input	FAN
S9532-EI	○	○	○	○	2	4

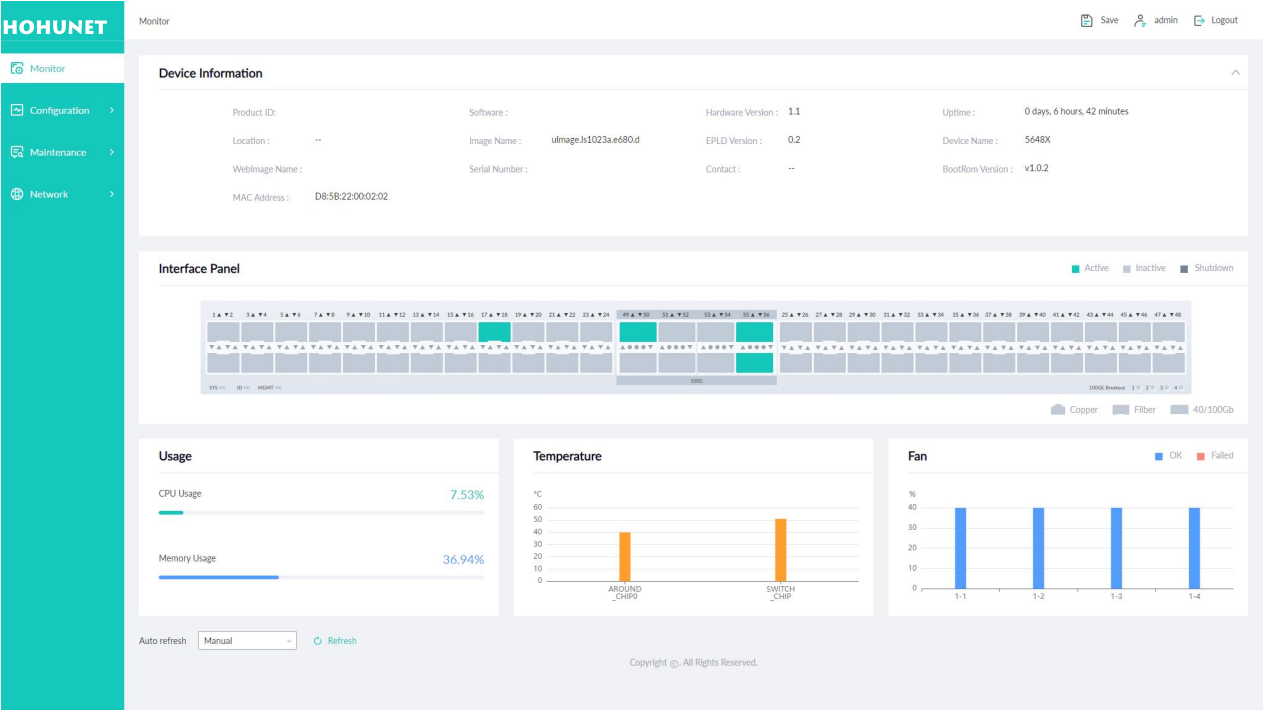
The S9500 Series switches support varied management ways, include console port / in-band network ports / out-of-band network port. Support SNMP v1/v2/v3, Support CLI (Command Line Interface), web management, Telnet and FTP connection. Support OAM to make management more convenient, and support SSH2.0, etc. to ensure security of management.

Moreover, leveraging its profound technical expertise and in-depth understanding of campus and enterprise networking needs, Hohunet has launched the Da Hu Cloud Management System (DHCS). It enhances network management and maintenance efficiency, reduces costs, elevates management intelligence, and delivers a faster, smarter, more secure and reliable network to better meet user requirements.



Visual WEB GUI

HOS allows you to quickly configure common configuration items using a visual WEB GUI, which lowers the application threshold for users.



The S9500 ports at a glance

Table 2: Family of the S9500 Series switches

Models	Ethernet Ports	Management	PSU 1/PSU 2	Cooling
S9532-EI	32 x 800G OSFP	Console: RJ45 to RS232 Ethernet: 1G Port	2 x CRPS	4 x Fan Modules (front-to-back airflow)

S9500 Series Physical Specifications

Packet Switch capacity (Tbps)

- S9532-EI: 51.2 Tbps (bidirectional)

Layer 2/Layer 3 Throughput (Gpps)

- S9532-EI: 76.19 Gpps (bidirectional)

CPU

- Quad-core processor, ARM A53

MTBF

- S9532-EI: ≥90000H

Memory

- eMMC: 8GB on all models
- DRAM: 4GB on all models

Dimensions (W x H x D) without package

- S9532-EI: 44.2 x 8.8 x 56cm

Weight (Net weight/Gross weight)

- S9532-EI: 11.8kg/16kg

Environmental ranges

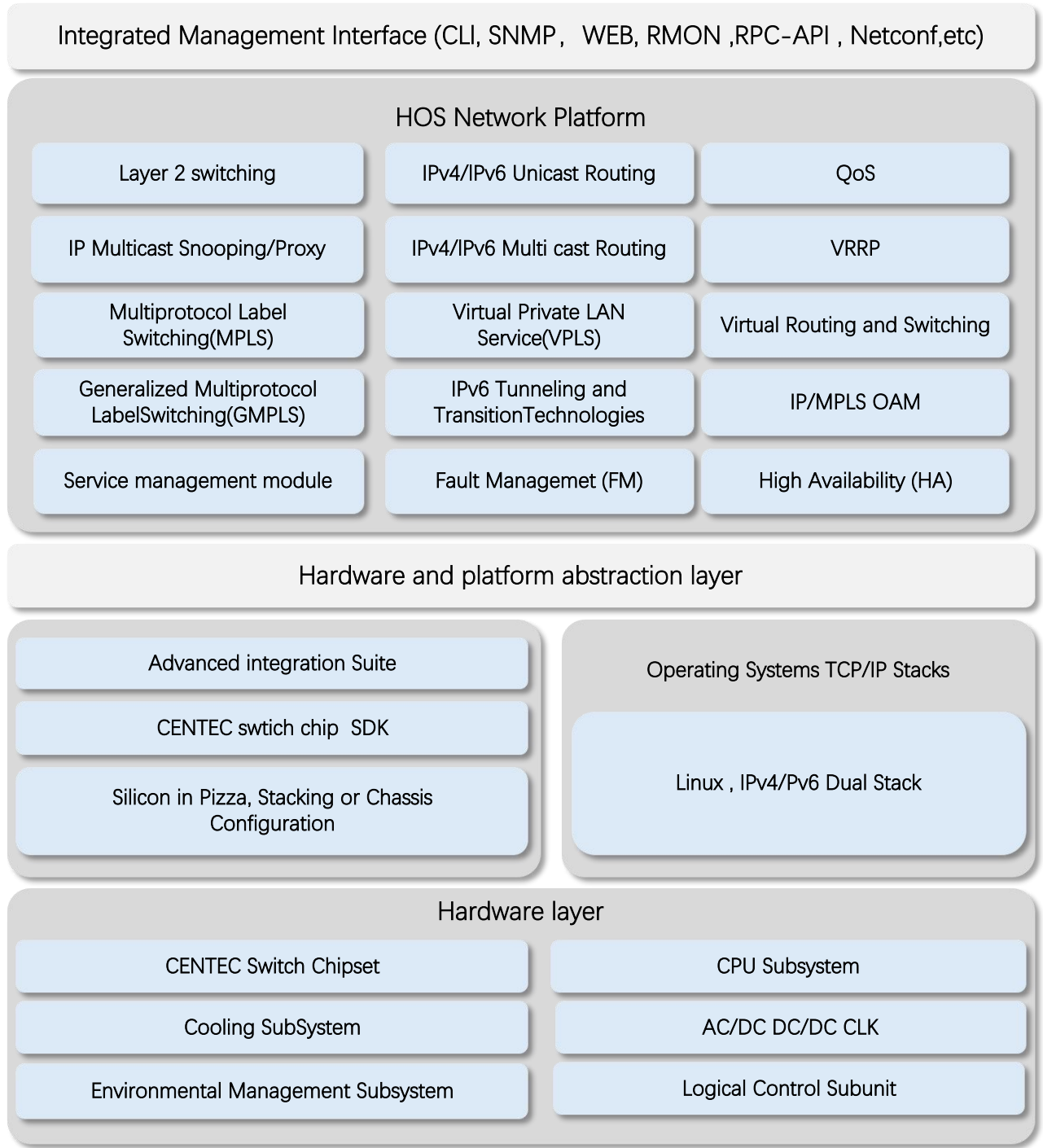
- Operating temperature: 0°C to 45°C
- Storage temperature: -40°C to 70°C
- Running Humidity: 10% to 90% (No condensation)
- Store Humidity: 5 to 95% (No condensation)

Temperature alarm

- Alarm threshold: 50°C

S9500 Software Specifications

HOHUNET implements a unified software platform, and the software capabilities supported by the devices are listed in the document [‘HOS Software features’](#) .



- * All HOHUNET switches use a normalized software platform and image package file
- * Unified software version iteration plan
- * Unified user experience

Ordering Information

S9500 Series

Items	Description
S9532-EI	800G Data Center Switch, with 32*800G OSFP, Dual power supply modules(C13), 4 hot-swappable fan modules.

AC Power Supplies use for S9500

Items	Description
PSU-3200-AC-AFO	S9500 Series 3200W AC power supply (front-to-back airflow)

Software Licenses

Items	Description
Software License	MS, L3 enhance features software license key, Preinstalled
Software License	MA, MPLS features software license key
Software License	ST, Stacking feature software license key

Accessory of S9532-EI

Items	Front Mounting	Rear Mounting	Screw	Power Cord	Console (RS232 to RJ45)	Grounding Cable
SS9532-EI	2	4	14	2	1	1

About HOHUNET:

HOHUNET was established in 2015 as a technology-oriented company specializing in the independent development of switch products based on domestic chips. With the continuous evolution of chip technology, HOHUNET has launched a range of differentiated products based on this chip platform. Currently, the company's product line covers a range from 1G to 800G and can be used in scenarios such as enterprise networks, carrier networks, data centers, and AI computing power. Currently, the main cooperation model for the company is OEM/ODM, dedicated to providing customers with flexible and end-to-end customized products and technical consulting services. Becoming the most trusted business partner for customers has always been the company's mission and principle.

Contact us:

Shenzhen Haohu Network Technology Co.,Ltd.

Headquarter Address:

Lining Center Building, Nanshan Hi-Tech Park, Nanshan, Shenzhen, Guangdong, China

Corporate and Sales Email: business@hohUNET.com

Telephone: 0086-755-26418565

Website: www.hohUNET.com

