

# S8500 SERIES SWITCHES

## DATASHEET

High Performance Data Center Switch

Version:V1.2

Release Date:2025/12/12

### Product Overview

The S8500 series switch designed on a domestic new generation switch Chip, which called [SerdesX Series Chip platform](#). With 32/64 x 400G high speed ports and rich features, these switches will perfectly meets the requirements of Metro, Enterprise, Data Center, and Hyper converged infrastructure (HCI) networks.



### Key features of the S8500 Series Switch

- Support MPLS features (L2/L3 VPN) to build a unified and converged network platform.
- MLAG which can build an Active-Active system to improve the reliability of the network links from single board grade to device grade.
- Implementing Vxlan and BGP protocols to build EVPN applications for data centers scenario.
- Switch-to-switch encryption using MACsec (Media Access Control Security) AES-CMAC.
- Precision Timing Protocol.
- Rich L2/L3 features like IPv6, OSPF, BGP, PIM, etc.

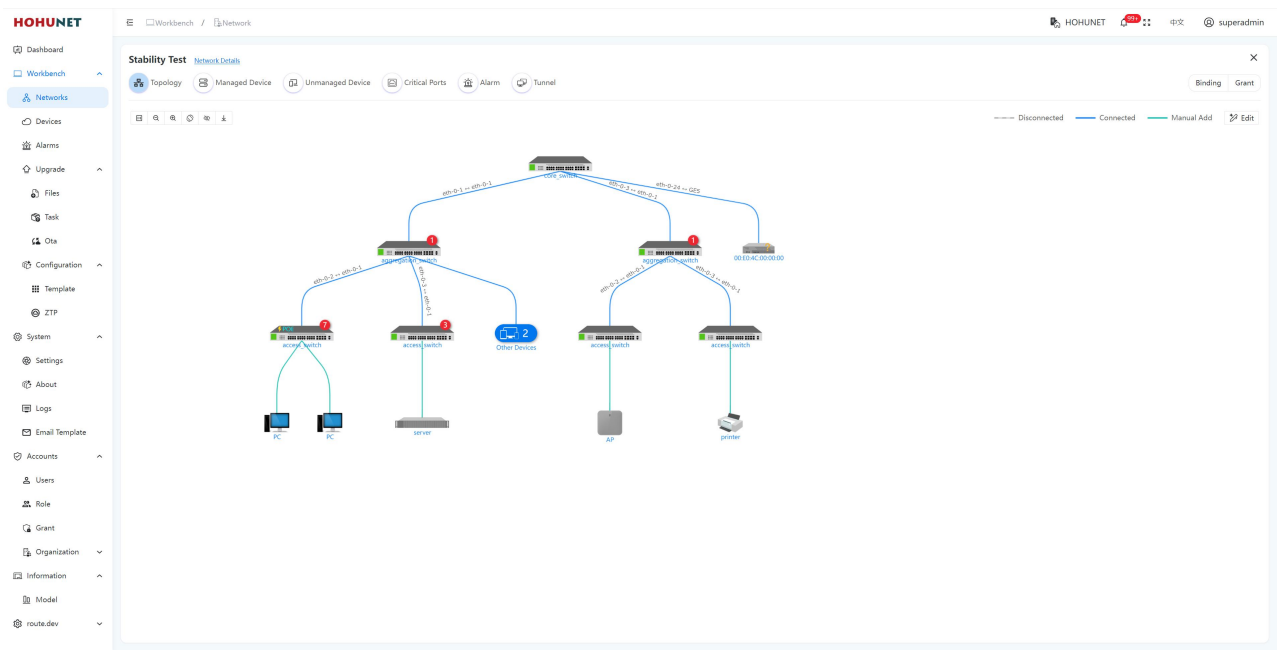
The S8500 series switch provide redundant hot-swappable power supplies (AC and DC are both available) and 6/4 bays with Field replaceable fan modules. Generally, airflow of S8500 Series is front to rear (AFO), but a customization of rear to front (AFI) airflow is also acceptable.

Table 1: Feasible PSU and airflow of S8500

Items	AC	DC	AFO	AFI	Power Input	FAN
S8532-EI	○	○	○	○	2	6
S8564-EI	○	○	○	○	2	4

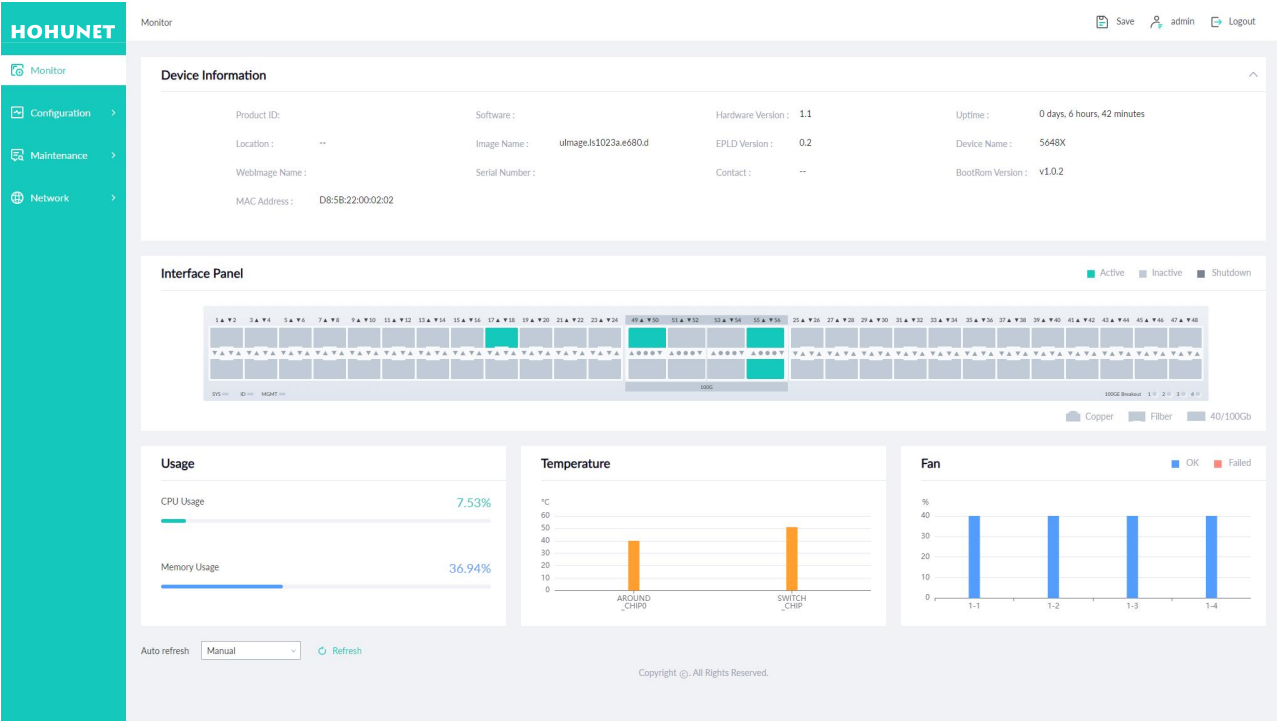
The S8500 Series switches support varied management ways, include console port / in-band network ports / out-of-band network port. Support SNMP v1/v2/v3, Support CLI (Command Line Interface), web management, Telnet and FTP connection. Support OAM to make management more convenient, and support SSH2.0, SSL, etc. to ensure security of management.

Moreover, leveraging its profound technical expertise and in-depth understanding of campus and enterprise networking needs, Hohunet has launched the Da Hu Cloud Management System (DHCS). It enhances network management and maintenance efficiency, reduces costs, elevates management intelligence, and delivers a faster, smarter, more secure and reliable network to better meet user requirements.



## Visual WEB GUI

HOS allows you to quickly configure common configuration items using a visual WEB GUI, which lowers the application threshold for users.



## The S8500 family of Ethernet switches consists of the following models

Table 2: Family of the S8500 Series switches

Models	Ethernet Ports	Management	PSU 1/PSU 2	Cooling
S8532-EI	32 x 400G QSFP 112	Console: RJ45 to RS232 Ethernet: 1G Port Storage: USB	1300W/1300W CRPS	6 x Fan Modules (front-to-back airflow)
S8564-EI	64 x 400G QSFP 112	Console: RJ45 to RS232 Ethernet: 1G Port Storage: USB	3200W/3200W CRPS	4 x Fan Modules (front-to-back airflow)

S8500 Physical Specifications

Packet Switch capacity (Tbps)

- S8532-El: 25.6 Tbps (bidirectional)
- S8564-El: 51.2 Tbps (bidirectional)

Layer 2/Layer 3 Throughput (Gpps)

- S8532-El: 38.09 Gpps (bidirectional)
- S8564-El: 76.18 Tbps (bidirectional)

CPU

- 4-core processor, ARM A53 (1GHz)

Memory

- eMMC: 8GB on all models
- DRAM: 4GB on all models

Dimensions (W x H x D) with package

- S8532-El: TBD
- S8564-El: TBD

Dimensions (W x H x D) without package

- S8532-El: 44.2 x 4.4 x 49.4cm
- S8564-El: 44.2 x 8.8 x 62cm

Temperature alarm

- Alarm threshold: 50°C

Cooling [CFM] - Total maximum airflow

- S8532-El: 264.16
- S8564-El: 618.72

Weight (Net weight/Gross weight)

- S8532-El: 11.5kg/16kg
- S8564-El: 20.34kg/24kg

Power consumption

Worst case, all ports used, line-rate traffic

- S8532-El: 383W
- S8564-El: TBD

Typical power consumption

- S8532-El: 307W
- S8564-El: TBD

Environmental ranges

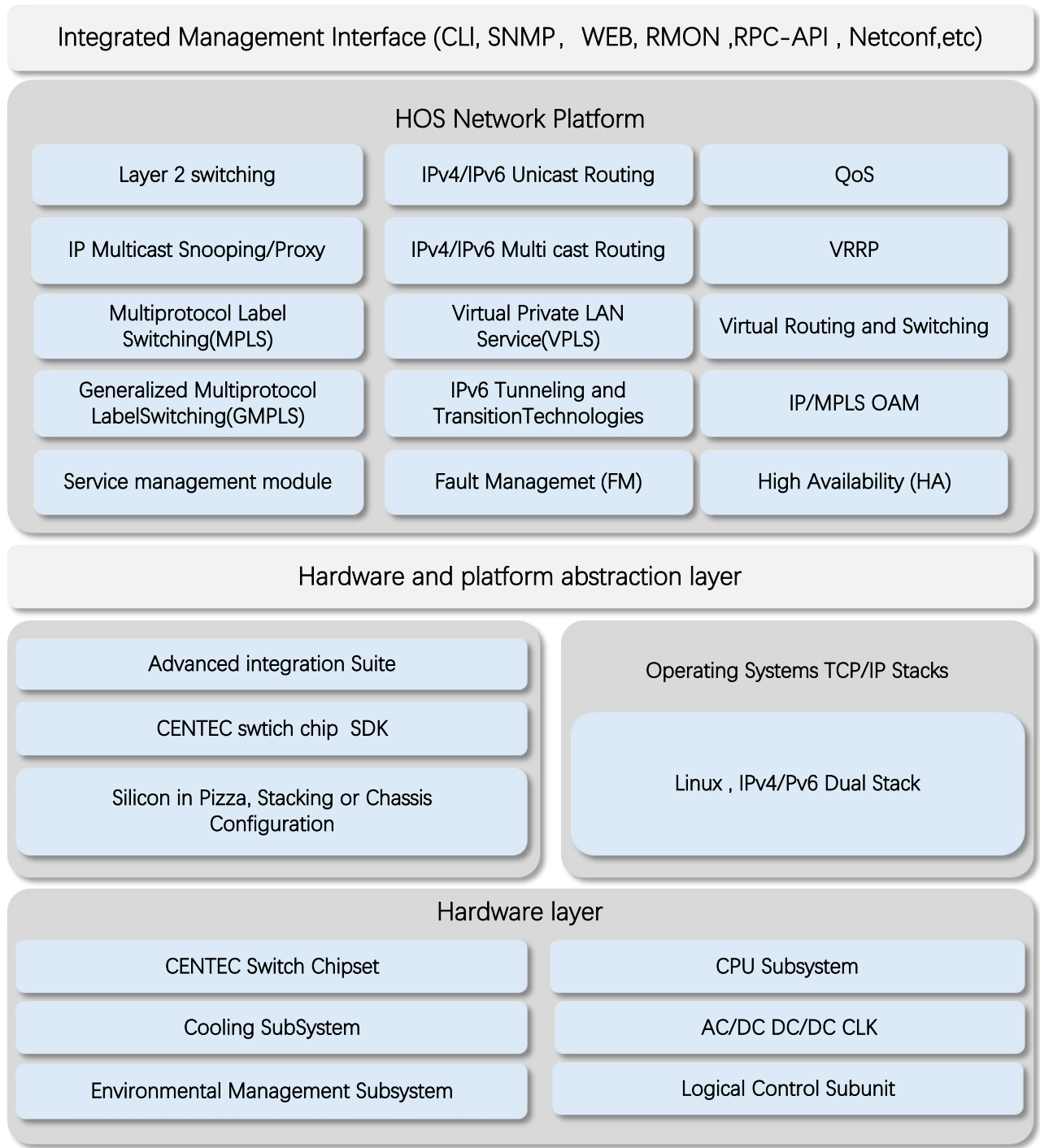
- Operating temperature: 0°C to 45°C
- Storage temperature: -40°C to 70°C
- Running Humidity: 10% to 90% (No condensation)
- Store Humidity: 5 to 95% (No condensation)
- Operating altitude: 0~5km

MTBF

- S8532-El: ≥90000h (~10.3 Years)
- S8564-El: ≥90000h (~10.3 Years)

S8500 Software Specifications

HOHUNET implements a unified software platform, and the software capabilities supported by the devices are listed in the document [‘HOS Software features’](#) .



- \* All HOHUNET switches use a normalized software platform and image package file
- \* Unified software version iteration plan
- \* Unified user experience

Ordering Information

S8500 SERIES SWITCH

Items	Description
S8532-EI	400G Data Center Switch, with 32*400G QSFP112, Dual power supply modules(C13), 6 hot-swappable fan modules.
S8564-EI	400G Data Center Switch, with 64*400G QSFP112, Dual power supply modules(C13), 4 hot-swappable fan modules.

AC/DC Power Supplies use for all models

Items	Description
PSU-1300-AC-AFO	S8532-EI 1300W AC power supply (front-to-back airflow)
PSU-1300-DC-AFO	S8532-EI 1300W DC power supply (front-to-back airflow)
PSU-3200-AC-AFO	S8564-EI 3200W AC power supply (front-to-back airflow)
PSU-3200-DC-AFO	S8564-EI 3200W DC power supply (front-to-back airflow)

Software Licenses

Items	Description
Software License	MS, L3 enhance features software license key, Preinstalled
Software License	MA, MPLS features software license key
Software License	ST, Stacking feature software license key

Accessory of S8500

Items	Front Mounting	Rear Mounting	Rear Mounting Extension	Rack Rail	M4 Screw	Power Cord	Ground Cord	Console (RS232 to RJ45)
S8532-EI	2	2	2	2	18	2	1	1
S8564-EI	2	2	2	2	18	2	1	1

## About HOHUNET:

HOHUNET was established in 2015 as a technology-oriented company specializing in the independent development of switch products based on domestic chips. With the continuous evolution of chip technology, HOHUNET has launched a range of differentiated products based on this chip platform. Currently, the company's product line covers a range from 1G to 800G and can be used in scenarios such as enterprise networks, carrier networks, data centers, and AI computing power. Currently, the main cooperation model for the company is OEM/ODM, dedicated to providing customers with flexible and end-to-end customized products and technical consulting services. Becoming the most trusted business partner for customers has always been the company's mission and principle.

## Contact us:

Headquarter Address:

Lining Center Building, Nanshan Hi-Tech Park, Nanshan, Shenzhen, Guangdong, China

Corporate and Sales Email: [business@hohunet.com](mailto:business@hohunet.com)

Telephone: 0086-755-26418565

Website: [www.hohunet.com](http://www.hohunet.com)

