

# S5000 SERIES SWITCHES

## DATASHEET

Flexible Campus and Enterprise Switch

Version: V1.3

Release Date: 2025/12/04

### Product Overview

S5000 series switches, high-performance layer 3 Ethernet switch, which are designed based on high-performance hardware platform [VastLakes Series Chip platform](#), with various ports, compact 1U form factor. S5000 series switches provide complete Layer 3 network features to meet the requirement of Metro/Enterprise/HCI networks.



### Key Features of the S5000 Series Switches

- Support MPLS features (L2/L3 VPN) to build a unified and converged network platform.
- 2.5G downlink ports and various uplink ports to meet different network requirements.
- Rich L2/L3 features such as IPv6, OSPF, BGP, PIM etc.
- Support CLI/WEB/SNMP/SSH for flexible operation.

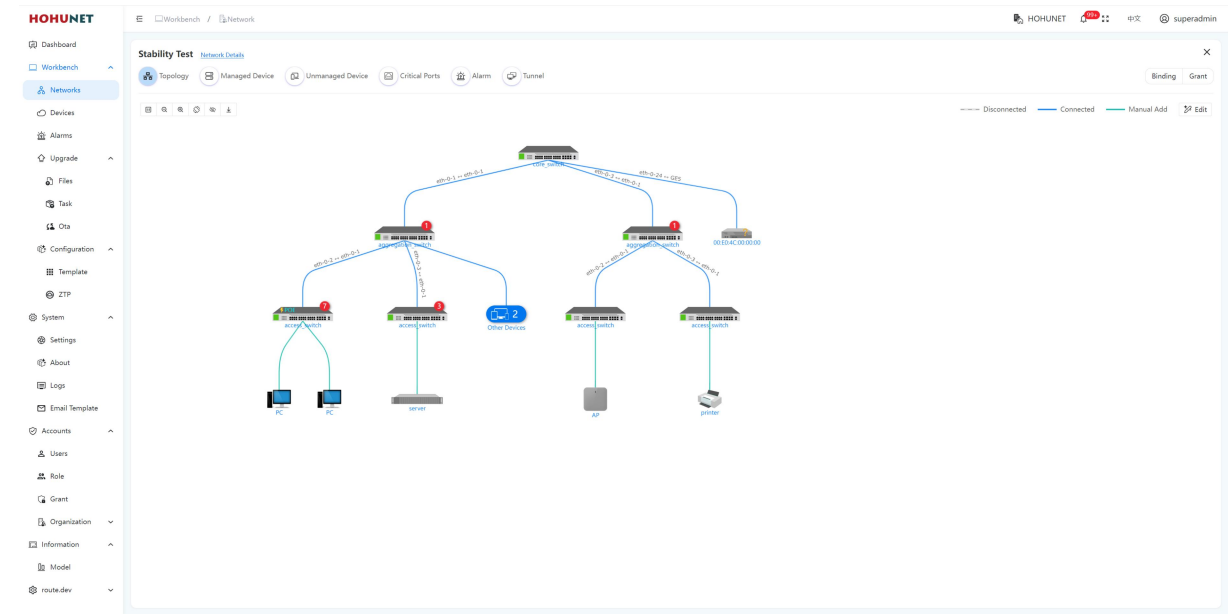
The S5000 series switches provide various power supply solutions for customers choosing. Generally, air flow of S5000 series is front to back (AFO), and some of models can do customization of back to front (AFI) airflow.

Table 1: Feasible PSU and Airflow of S5000 Series

Items	AC	DC	PoE	AFO	AFI	Power Input	FAN
S5048-4X2Q-EI	○	○	×	○	○	2	2
S5048-4X2Q-SI	○	×	×	○	×	1	4
S5040P-8T2Q4N-EI	○	○	48	○	○	2	2
S5032P-16T8N-EI	○	○	48	○	○	2	2
S5016P-8T8N-EI	○	○	24	○	○	2	2

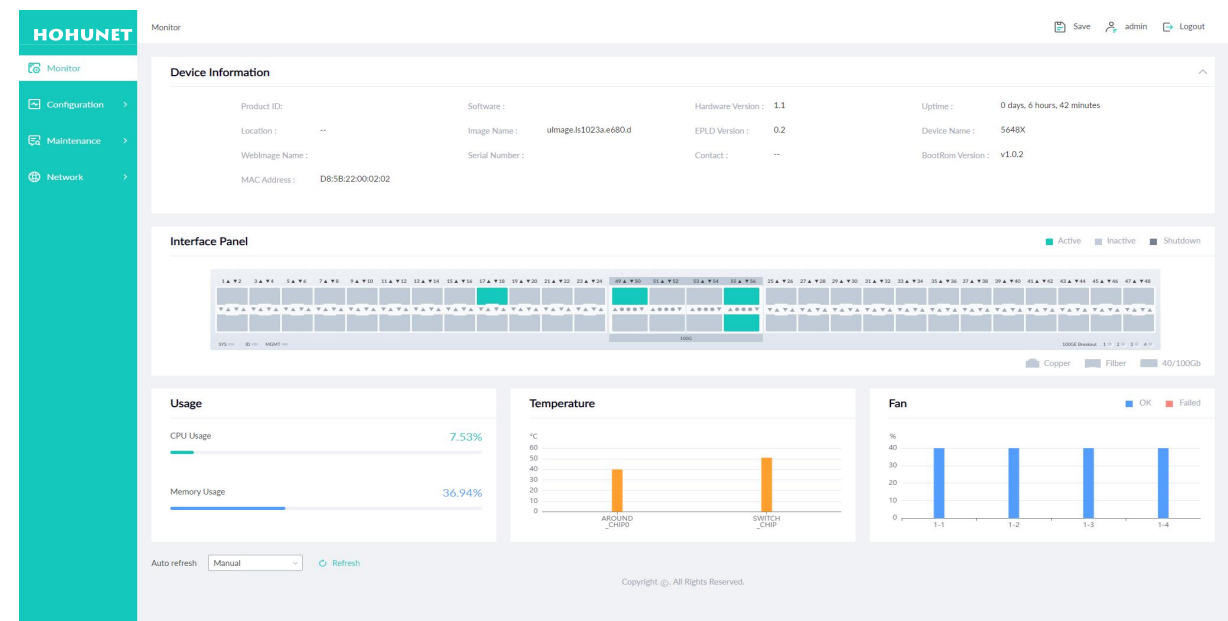
The S5000 series switches support varied management ways, include console, and support SNMP v1/v2/v3, Support CLI (Command Line Interface), web management, Telnet and FTP connection. Support OAM to make management more convenient, and support SSH2.0, etc. to ensure security of management.

Moreover, leveraging its profound technical expertise and in-depth understanding of campus and enterprise networking needs, Hohunet has launched the Da Hu Cloud Management System (DHCS). It enhances network management and maintenance efficiency, reduces costs, elevates management intelligence, and delivers a faster, smarter, more secure and reliable network to better meet user requirements.



Visual WEB GUI

The S5000 series allows you to quickly configure common configuration items using a visual WEB GUI, which lowers the application threshold for users.



The S5000 family of Ethernet switches consists of the following models:

Table 2: Family of the S5000 Series switches

Models	Ethernet Ports	Management	PSU 1/PSU 2	Cooling
S5048-4X2Q-EI	48 x 100M/1G/2.5G Base-T, 4 x 25G/10G SFP28, 2 x 40G QSFP+	Console: RJ45 to RS232 Ethernet: 1G Port	350W/350W	2 x Fan modules (front-to-back airflow)
S5048-4X2Q-SI	48 x 100M/1G/2.5G Base-T, 4 x 25G/10G SFP28, 2 x 40G QSFP+	Console: RJ45 to RS232 Ethernet: 1G Port	Fixed single 96W power supply	4 x Fixed fans (front-to-back airflow)
S5040P-8T2Q4N-EI	40 x 100M/1G/2.5G Base-T, 8 x 10G Base-T, 4 x 25G/10G SFP28, 2 x 40G QSFP+	Console: RJ45 to RS232 Ethernet: 1G Port Storage: USB	1200W/1200W	2 x Fan modules (front-to-back airflow)
S5032P-16T8N-EI	32 x 100M/1G/2.5G Base-T, 16 x 10G Base-T, 8 x 25G/10G SFP28	Console: RJ45 to RS232 Ethernet: 1G Port Storage: USB	1200W/1200W	2 x Fan modules (front-to-back airflow)
S5016P-8T8N-EI	16 x 100M/1G/2.5G Base-T, 8 x 10G Base-T, 8 x 25G/10G SFP28	Console: RJ45 to RS232 Ethernet: 1G Port Storage: USB	600W/600W	2 x Fan modules (front-to-back airflow)

S5000 Physical Specifications

Packet Switch Capacity (bidirectional)

- S5048-4X2Q-EI: 600Gbps
- S5048-4X2Q-SI: 600Gbps
- S5040P-8T2Q4N-EI: 720Gbps
- S5032P-16T8N-EI: 880Gbps
- S5016P-8T8N-EI: 640Gbps

Environmental ranges

- Operating temperature: 0°C to 40°C
- Storage temperature: -40°C to 70°C
- Running Humidity: 10% to 90% (No condensation)
- Store Humidity: 5% to 95% (No condensation)

Layer 2/Layer 3 Throughput (bidirectional)

- S5048-4X2Q-EI: 892.8Mbps
- S5048-4X2Q-SI: 892.8Mbps
- S5040P-8T2Q4N-EI: 1071.36Mbps
- S5032P-16T8N-EI: 1309.44Mbps
- S5016P-8T8N-EI: 952.32Mbps

Memory

- eMMC: 8GB
- DRAM: 2GB

CPU

- Dualcore, ARM A53(1.2GHz)

Temperature alarm

- Alarm threshold: 50°C

S5000 Physical Specifications

Power consumption

Worst case, all ports used, line-rate traffic

- S5048-4X2Q-SI: 66W
- S5040P-8T2Q4N-EI: 161.18W
- S5032P-16T8N-EI: 152.24W
- S5016P-8T8N-EI: 98.78W

Operating altitude

- S5048-4X2Q-EI: ≤5000m
- S5048-4X2Q-SI: ≤3000m
- S5040P-8T2Q4N-EI: ≤5000m
- S5032P-16T8N-EI: ≤5000m
- S5016P-8T8N-EI: ≤5000m

Dimensions (W x H x D) without Package

- S5048-4X2Q-EI: 442\*44\*357mm
- S5048-4X2Q-SI: 442\*44\*290mm
- S5040P-8T2Q4N-EI: 442\*44\*420mm
- S5032P-16T8N-EI: 442\*44\*449mm
- S5016P-8T8N-EI: 442\*44\*420mm

Weight (Net/Gross)

- S5048-4X2Q-EI: 7.2KG/10.3KG
- S5048-4X2Q-SI: 6KG/8.3KG
- S5040P-8T2Q4N-EI: 7.9kg/11.1kg
- S5032P-16T8N-EI: 8.3kg/11.5kg
- S5016P-8T8N-EI: 7.2kg/10.4kg

MTBF (Hours)

- S5048-4X2Q-EI: ≥90000
- S5048-4X2Q-SI: ≥70000
- S5040P-8T2Q4N-EI: ≥90000
- S5032P-16T8N-EI: ≥90000
- S5016P-8T8N-EI: ≥90000

Cooling [CFM] - Total maximum airflow

- S5048-4X2Q-EI: 68.76
- S5048-4X2Q-SI: 46.48
- S5040P-8T2Q4N-EI: 46.48
- S5032P-16T8N-EI: 105.32
- S5016P-8T8N-EI: 46.48

Dimensions (W x H x D) with Package

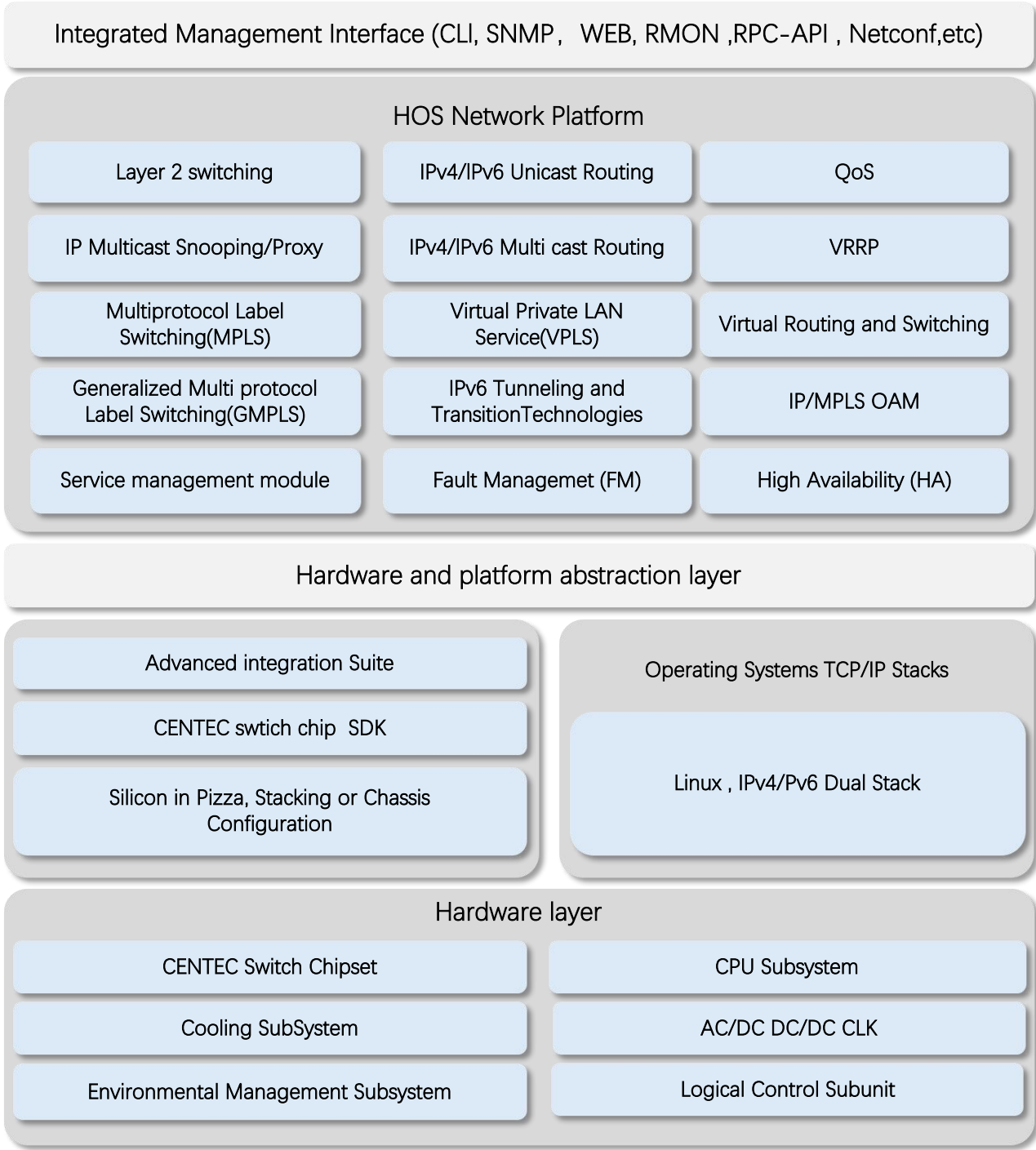
- S5048-4X2Q-EI: 557\*150\*495mm
- S5048-4X2Q-SI: 557\*150\*495mm
- S5040P-8T2Q4N-EI: 665\*150\*565mm
- S5032P-16T8N-EI: 665\*150\*565mm
- S5016P-8T8N-EI: 665\*150\*565mm

PoE budget

- S5040P-8T2Q4N-EI: 2000W
- S5032P-16T8N-EI: 2000W
- S5016P-8T8N-EI: 1000W

S5000 Software Specifications

HOHUNET implements a unified software platform, and the software capabilities supported by the devices are listed in the document [‘HOS Software features’](#) .



- \* All HOHUNET switches use a normalized software platform and image package file
- \* Unified software version iteration plan
- \* Unified user experience

Ordering Information

S5000 Series Switches

Items	Description
S5048-4X2Q-EI	2.5G enterprise switch, with 48 x 100M/1G/2.5G Base-T, 4 x 25G/10G SFP28, 2 x 40G QSFP+, Dual power supply modules, 2 x Hot-swappable fan modules.
S5048-4X2Q-SI	2.5G enterprise switch, with 48 x 100M/1G/2.5G Base-T, 4 x 25G/10G SFP28, 2 x 40G QSFP+, Fixed single power supplies, 4 x Fixed fans.
S5040P-8T2Q4N-EI	2.5G enterprise switch, with 40 x 100M/1G/2.5G Base-T(PoE++90W), 10 x 10G Base-T(PoE++90W), 4 x 25G/10G SFP28, 2 x 40G QSFP+, Dual power supply modules, 2 x Hot-swappable fan modules.
S5032P-16T8N-EI	2.5G enterprise switch, with 32 x 100M/1G/2.5G Base-T(PoE++90W), 16 x 10G Base-T(PoE++90W), 8 x 25G/10G SFP28, Dual power supply modules, 2 x Hot-swappable fan modules.
S5016P-8T8N-EI	2.5G enterprise switch, with 16 x 100M/1G/2.5G Base-T(PoE++90W), 8 x 10G Base-T(PoE++90W), 8 x 25G/10G SFP28, Dual power supply modules, 2 x Hot-swappable fan modules.

AC/DC Power Supplies use for S5000 Series Switches.

Items	Description
PSU-350-AC-AFO	S5000 Series 350W AC power supply (front-to-back airflow)
PSU-600-AC-AFO	S5000 Series 600W AC power supply (front-to-back airflow)
PSU-1200-AC-AFO	S5000 Series 1200W AC power supply (front-to-back airflow)

Software licenses for S5000 Series Switches.

Items	Description
Software License	EB, Basic L3 software features, Preinstalled on SI models
Software License	MS, L3 enhance features software license key, Preinstalled on EI models
Software License	MA, MPLS features software license key
Software License	ST, Stacking feature software license key

Accessory of S5000 Series

Items	Front Mounting	Rear Mounting	Rear Rack Rail	M4 Screw	Power Cord	Ground lead	Console (DB9 to RJ45)
S5048-4X2Q-EI	2	2	2	12	2	1	1
S5048-4X2Q-SI	2	/	/	12	1	1	1
S5040P-8T2Q4N-EI	2	2	2	12	2	1	1
S5032P-16T8N-EI	2	2	2	12	2	1	1
S5016P-8T8N-EI	2	2	2	12	2	1	1

## About HOHUNET:

HOHUNET was established in 2015 as a technology-oriented company specializing in the independent development of switch products based on domestic chips. With the continuous evolution of chip technology, HOHUNET has launched a range of differentiated products based on this chip platform. Currently, the company's product line covers a range from 1G to 800G and can be used in scenarios such as enterprise networks, carrier networks, data centers, and AI computing power. Currently, the main cooperation model for the company is OEM/ODM, dedicated to providing customers with flexible and end-to-end customized products and technical consulting services. Becoming the most trusted business partner for customers has always been the company's mission and principle.

## Contact us:

Shenzhen Haohu Network Technology Co.,Ltd

Headquarter Address:

Lining Center Building, Nanshan Hi-Tech Park, Nanshan, Shenzhen, Guangdong, China

Corporate and Sales Email: [business@hohunet.com](mailto:business@hohunet.com)

Telephone: 0086-755-26418565

Website: [www.hohunet.com](http://www.hohunet.com)

